

COUGAR

VOLLEYBALL



2015

WASHINGTON STATE

WASHINGTON STATE VOLLEYBALL 2015 FACTS

Location	Pullman, Washington
Founded	1890
Enrollment	19,756 (Pullman campus)
Conference	Pac-12
Nickname	Cougars
Colors	Crimson & Gray
Interim President	Dan Bernardo
Director of Athletics	Bill Moos
Deputy Director of Athletics/SWA	Anne McCoy
Home Court (capacity)	Bohler Gym (3,000)

VOLLEYBALL OFFICE

Head Coach	Jen Greeny (Washington State 1999)
Record at WSU	53-76 / 4 years
Career Record	165-100 / 8 years
Assistant Coach	Burdette Greeny (Washington State 1999)
Assistant Coach	Shannon Hunt (Washington State 1998)
Operations Coordinator	Katie Hinrichs (Lewis-Clark State 2011)
Volunteer Coach	James Dorr (Limestone College 2013)
Office Phone	509-335-4290
Office FAX	509-335-7168
Building Address	Bohler Athletic Complex 230
Mailing Address	P.O. Box 641602 Pullman, WA 99164-1602

ATHLETIC COMMUNICATIONS OFFICE

Associate Director of Athletics	Bill Stevens
Assistant Directors Athletic Communications	Linda Chalich Jessica Holmes Bobby Alworth Jim Crawford
Volleyball Contact	Linda Chalich
Office Phone	509-335-0268
Cell Phone	509-432-3263
Email	lindak@wsu.edu
Athletic Web Page	www.wsucougars.com
Building Address	Bohler Athletic Complex 195
Mailing Address	P.O. Box 641602 Pullman, WA 99164-1602



Washington State University 2015 Volleyball Roster

No.	Name	Pos.	Ht.	Yr.	Exp.	Hometown (Previous School)
2	Kate Sommer*	L/DS	5-4	SR	3V	Pacific Palisades, Calif. (Lighthouse Christian Academy)
3	Haley DeSales	OH	6-0	FR	HS	Burbank, Calif. (La Salle HS)
5	McKenna Woodford	OH	6-4	FR	HS	Chandler, Ariz. (Hamilton HS)
6	Jocelyn Urias	MB	6-3	FR	HS	Tijuana, Mexico (J. Vasconcelos Bilingual HS)
7	Katelyn Vander Tuig	S	5-10	FR	HS	Tulare, Calif. (Central Valley Christian HS)
10	Taylor Mims	MB	6-3	FR	HS	Billings, Mont. (Billings Senior HS)
11	Ashley Vander Tuig	MB	6-2	JR	1V	Tulare, Calif. (Central Valley Christian HS / Azusa Pacific)
12	Claire Martin	MB	6-4	FR	HS	Bremerton, Wash. (Bellamine HS)
13	Olivia Coale	DS	5-6	FR	HS	Vancouver, Wash. (Skyview HS)
14	Haley MacDonald	S	6-0	JR	2V	Bothell, Wash. (Jackson HS)
17	Tani Stephens	DS	5-8	JR	2V	Albany, Ore. (West Albany HS)
18	Ella Lajos	MB	6-3	FR	HS	San Jose, Calif. (Valley Christian HS)
20	Hailey Bethune	OH	6-0	JR	2V	Stockton, Calif. (Lincoln HS)
21	Casey Schoenlein	OH	6-5	SO	1V	Bellevue, Wash. (Newport HS)
22	Kyra Holt	OH	6-1	SO	1V	Hercules, Calif. (Albany HS)

* = Team captain

WSU Head Coach: Jen Greeny (Washington State '99)

Assistant Coaches: Burdette Greeny (WSU '99), Shannon Hunt (WSU '99)

Operations Coordinator: Katie Hinrichs (Lewis-Clark State '11)

Volunteer Coach: James Dorr (Limestone College '13)

Athletic Trainer: Barb Russell

Strength & Conditioning: Ashley Hamada

Equipment Manager: Nate Weber

Student Manager: McKenzie DeVore



Head Coach Jen Greeny

Jen Greeny begins her fifth season at the helm of the Washington State University volleyball program in the fall of 2015, and another nationally-ranked recruiting class has fans eager with anticipation.

Greeny and her staff have been consumed with a concerted effort to return the Cougars volleyball program to the national prominence it received when Greeny was a player and an assistant coach. To that end, the Cougars ranked No. 17 in recruiting class rankings from 2013-15 according to PrepVolleyball.com, which includes two classes ranked among the Top 21: No. 14 in 2013, and No. 21 in 2015, with the 2014 class garnering honorable mention accolades. Among WSU recruits are five PrepVolleyball.com Top 100 players and two Gatorade State Players of the Year. Greeny credits her husband and lead recruiter, assistant coach Burdette Greeny, with achieving these fine recruiting classes.

The Cougars compete in the country's strongest volleyball conference, the Pac-12 Conference, where an NCAA record of 10 teams competed in the NCAA Championship tournament last year. The 2014 season found WSU facing 12 NCAA Championship tournament teams in 20 of its 32 matches, with the Cougars leading the nation in sets won versus Top 25-ranked or receiving votes teams by a non-ranked team. WSU's 2014 regular season schedule was rated the fourth most difficult among the Pac-12 member schools (Pablo rankings). In four years, Greeny's WSU teams have posted a 40-7 non-conference record.

Meeting tough competition has brought out great performances by Cougar players. The 2015 senior libero Kate Sommer, the first recruit signed by Greeny, has accumulated 1,475 digs in three years which is second-best in WSU all-time records and only 298 digs from claiming the school record. Sommer's season totals of 521 digs (2014), 495 digs (2013) and 459 digs (2012) rank fourth, sixth, and eighth-best in WSU's single season school records. Sommer was selected from the 2015 USA Open Tryouts to compete for the USA team at the 11th Annual Global Challenge tournament in Croatia in the summer of 2015.

A pair of 2014 seniors tallied impressive statistics on the court: Jaicee Harris was the fourth Cougar to reach 1,000 kills and 1,000 digs in a career, and Chelsie Bettinson was second in the Pac-12 in blocks per set, and fourth in the nation in total blocks, during the regular season.

Kyra Holt enters her junior season on the verge of reaching the 1,000 kills threshold. Holt, the 2013 AVCA Pacific North Region Freshman of the Year as well as an All-Pac-12 Honorable Mention and Pac-12 All-Freshman First Team selection, starts the 2015 season with 871 career kills, just 129 kills from 1,000. Holt also has 590 career digs and her 999.5 points is eighth-best in WSU's all-time records.

In March 2011, Greeny became the 12th coach in the history of the Cougars volleyball program. She has compiled a four-year record of 53-76 at WSU and has an eight-year career record of 165-100. As Jennifer Stinson, Greeny played and coached at WSU during the program's most successful years on the Palouse and when hired, Greeny made a commitment to not only restore the program but to take it to the next level of success.

Under Greeny's mentoring in 2011, Megan Ganzer became the fourth All-America player in WSU history and the first selected since 1996. Greeny, and her assistant coach Burdette Greeny, have coached eight All-Americans and several players who have had successful professional careers including Ganzer (Puerto Rico, Romania, and Germany), Camryn Irwin (Austria and Sweden), Chelsie Bettinson (Sweden) and Anile Clemente, a three-time All-American at Lewis-Clark State (Denmark).

Greeny has also changed the academic culture of the program with seven consecutive semesters of a team grade point average of 3.0 or better. As the head volleyball coach at Lewis-Clark State College (Lewiston, Idaho) from 2007-10, Greeny accumulating an impressive 112-24 record (.824) while turning the Warriors' program into one of the premier NAIA teams. She took the reins of a struggling program and led it to success, winning four consecutive Frontier Conference regular season titles and four consecutive berths to the NAIA National Tournament. The Warriors finished in the top 13 in the nation each year and ended the 2010 season at 31-3 (.912), the best mark in the history of the program. Greeny was a four-time Frontier Conference Coach of the Year and the American Volleyball Coaches' Association's Northwest Region Coach of the Year.

Jennifer Stinson was a stellar multi-sport athlete at Davenport (Wash.) High. At WSU she became the seventh player in WSU history with 1,000 career kills. A three-time All-Pacific-10 Conference selection, Greeny's statistics are prominent in WSU's all-time career lists ranking third in block assists (360), fourth in total blocks (419), and seventh in solo blocks (59). She trained with the 1997 U.S. National volleyball team. was instrumental in WSU's second and only other appearance in the Elite Eight of the NCAA Tournament, in 2002, this time as an assistant coach. Greeny also excelled in the classroom where she was WSU's Athlete of the Year in 1998-99. She was a CoSIDA District VIII Academic All-America first-team and second-team selection her final two years and was a Pac-10 Volleyball All-Academic selection three times. She received her bachelor's degree in education from WSU in 1999.

Greeny spent four and one-half years on WSU Head Coach Cindy Fredrick's volleyball coaching staff. At the time of her departure, Greeny had been involved in six of the 10 seasons Cougar volleyball qualified for postseason action, three as a player and three as an assistant coach. During her playing career, WSU was ranked as high as fifth in the country and made the Elite Eight of the NCAA Championship Tournament.

She is a member of the Pullman Regional Hospital Foundation. Greeny and her husband, Burdette Greeny, a former standout pitcher at WSU and an assistant volleyball coach at WSU, have two daughters Lauren and Leah.





Burdette Greeny, Assistant Coach

Burdette Greeny may not have originally envisioned a career coaching collegiate women's volleyball but his innate competitive nature and passion to see young people develop to their top potential both on and off the court have made him highly successful in this role.

Greeny joined the Cougar volleyball program in March 2011 as an assistant coach after holding the same title at Lewis-Clark State College for three seasons prior to being promoted to Associate Head Coach in 2010. His recruiting prowess is evident in the PrepVolleyball.com's national rankings. The Cougars ranked No. 17 in recruiting class rankings from 2013-15, which includes two classes ranked among the Top 21: No. 14 in 2013, and No. 21 in 2015, with the 2014 class garnering honorable mention accolades. Not only does WSU compete in the country's strongest volleyball conference, the Pac-12, the Cougars recruit against the best with eight Pac-12 teams ranked in the PrepVolleyball.com's Top 30 and seven in the Top 21. Among Greeny's

WSU recruits are five PrepVolleyball.com Top 100 players and two Gatorade State Players of the Year.

"Burdette Greeny should be credited for much of the hard work in securing these top-ranked recruiting classes," Cougar Head Coach Jen Greeny said. "The recruits have said Burdette is easy and fun to talk to, is an amazing communicator, and is extremely passionate about Washington State and Pullman. Burdette cares not only about a player's skills in the recruiting process but also about each individual and if they will fit in with our team core values. Burdette has emerged as one of the best recruiting coordinators in the country and it definitely shows with the amount of talent and character in his recruiting classes."

Head Coach Jen Greeny and her staff have led the Cougars to many noteworthy accomplishments. The 2013 squad had an 18-win season, including going 13-0 in the non-conference portion of the schedule. Wins that season came over three top 25-ranked Pac-12 teams and four wins came against NCAA tournament teams. Last year the Cougars faced the fourth most difficult regular season schedule among all the Pac-12 schools (Pablo rankings). The 2014 season found WSU facing 12 NCAA Championship tournament teams in 20 of its 32 matches with the Cougars leading the nation in sets won versus Top 25-ranked/teams receiving votes by a non-ranked team. WSU also tied for second in the nation for most two-point set losses to Top 25-ranked/teams receiving votes. Senior Chelsie Bettinson was second in the Pac-12 in blocks per set and fourth in the nation in total blocks during the regular season. The Cougars tallied 308.5 team blocks, ranked 36th nationally, and the highest WSU total since 2005. Eight players accumulated career statistics that were among the WSU top 10 best in the history of the program.

In addition to improvement on the court, the Cougar volleyball program has established academic success with seven semesters of a team grade point average of 3.0 or better.

Burdette Greeny assisted his wife, Jen, at Lewis-Clark State College from 2007-10. In 2009, Greeny was one of 20 assistant coaches nominated for the NAIA National Assistant Coach of the Year Award.

Greeny was an all-league performer in both basketball and baseball at Port Angeles HS. The Tacoma NewsTribune named Greeny one of the top ten pitchers in the state in 1993. That year he was drafted by the New York Mets in the 32nd round but chose to stay in school and attended Tacoma Community College from 1993 to 1995 where he played one year of basketball and two years of baseball. He earned second-team All-West Region honors both years as a third baseman and also set a school record for striking out 17 batters in a game against Lower Columbia Community College. He pitched for Washington State in 1997, winning the team's award for strength and conditioning. He signed as a free agent with the Milwaukee Brewers before the 1998 draft and was with the organization for two seasons.

Greeny earned a degree in humanities with an emphasis in English from WSU in 1999. From 2000 through 2007 he was the head coach in the Pullman American Legion Baseball organization. His teams won two regular season titles, one district title, and made the first appearance by a Pullman team at the state tournament since 1968. In addition, Greeny's Pullman team tallied the first state tournament win in the 60-year history of the program. Of his American Legion players, 88 percent went on to play college baseball. Greeny spearheaded the development of the Palouse Summer Series, bringing to Pullman some of the best legion teams in the state and Canada and he was the recipient of the 2005 Pullman Chamber of Commerce STAR (Supporting Tourism and Recreation) Award which recognizes organizations, individuals and businesses that work to support and enhance tourism and economic development in our region, and is presented by the Palouse Marketing Committee.

Burdette is married to WSU's head coach Jen Greeny, and they have two daughters, Lauren and Leah.



Shannon Hunt, Assistant Coach

Shannon Wyckoff Hunt joined the Cougar volleyball program as a volunteer coach in August 2011 and was promoted to assistant coach in the spring of 2013. Her ability to hone the skills and techniques of the Cougar defense directly contributed to the 18-win season in 2013, and was an attribute in 2014 with WSU leading the nation in sets won versus Top 25-ranked/receiving votes teams by a non-ranked team, and tied for second in the nation for most two-point set losses to Top 25-ranked/receiving votes teams.

Under Hunt's guidance, WSU's 15.19 digs per set average was the highest in four years and sophomore defensive specialist Kate Sommer had another outstanding season with 495 digs, fifth-best in WSU single season records. Sommer's two-year career total of 954 digs is 10th-best in Cougar all-time records. In addition, WSU held the 2013 opponents to a .208 hitting percentage average, the lowest since the 2006 season.

Senior libero Kate Sommer, the first recruit signed by Greeny and her staff at WSU, has accumulated 1,475 digs in three years which is second-best in WSU all-time records and only 298 digs from claiming the school record. Sommer's season totals of 521 digs (2014), 495 digs (2013) and 459 digs (2012) rank fourth, sixth, and eighth-best in WSU's single season school records. Sommer was selected from the 2015 USA Open Tryouts to compete for the USA team at the 11th Annual Global Challenge tournament in Croatia in the summer of 2015.

Hunt was an outstanding student and athlete at WSU from 1994 through 1997, and a teammate of Greeny. During Hunt's collegiate career the Cougars volleyball team played all four years in the NCAA Championship Tournament and advanced to the Elite Eight once and to the Sweet Sixteen once.

She was the first Washington State player to reach 1,000 kills and 1,000 digs in a career. Her 1,254 career digs was the WSU all-time list leader from 1997 until 2008 and is currently second-best all-time. Hunt tallied 1,051 career kills which was fifth-best at the time and now ranks ninth-highest in school history. In addition, her career 83 service aces total is ranked 11th-best at WSU.

Hunt competed at Prairie High near Vancouver, Wash., and was the state volleyball Player of the Year three consecutive years - twice in AA and once in AAA. She was the first four-time all-league selection in the history of the Greater St. Helens League. The Falcons' volleyball team finished fourth three times in the state championships. Her senior year Prairie also won the state AAA Academic title. Hunt was a starter on the Nike Northwest Juniors Club team all five years she played.

At Washington State, Hunt started on the left side as a freshman and missed only six matches in the starting lineup, due to injury, during her four-year career. As a sophomore Hunt's 376 digs led team and 3.72 digs per game was third-best in conference. She set a school record with 32 digs in a match at South Florida in 1995. She was named to two all-tournament teams as a junior and was an important cog in the Cougars' advancing to the NCAA Championships Elite Eight. As a senior, Hunt continued amassing kills and digs as an outside hitter, earned two more all-tournament honors, and helped lead the Cougars to the Sweet Sixteen at the NCAA Championships.

Hunt was recognized for her academic excellence with Pac-10 All-Academic second team and honorable mention selections as well as being named to the GTE/CoSIDA District VIII Academic All-America Teams three times.

After graduating from WSU in the spring of 1998 with a degree in education, Hunt taught at the elementary level in the Vancouver, Wash., and coached volleyball at Heritage High and Hockinson High Schools.

Prior to returning to WSU Hunt taught and coached in the Vancouver, Wash., area for a dozen years. She was the head volleyball coach at Prairie High School in Brush Prairie, Wash., for the 2000 through 2003 seasons where she tallied a state championship tournament berth and had three players advance from prep to collegiate volleyball careers. She was inducted into the Prairie High School Hall of Fame in January of 2015.

Hunt moved to the newly constructed Hockinson High School, also in Brush Prairie, Wash., where she was the head volleyball coach from 2004 through 2010. At Hockinson, Hunt led two Hawks' volleyball teams to state championship tournaments and had five players play collegiately after their prep volleyball careers.

Hunt lives in Pullman with her husband Joe and their sons Grayson and Austin.



Katie Hinrichs Operations Coordinator

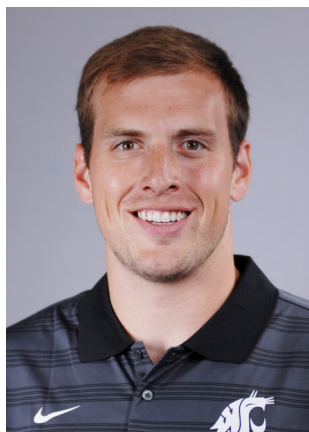
Katie Hinrichs (pronounced hen-ricks) joined the Cougar volleyball staff in June 2011 after an outstanding prep and collegiate playing career.

Hinrichs played libero for WSU Head Coach Jen Greeny at Lewis-Clark State College and during her career the Warriors tallied 112 wins and 24 losses, won four regular season and post-season Frontier Conference titles, and advanced to the national NAIA Championship Tournament all four years. Hinrichs, a three-year team captain, had school-record performances including digs in a match with 41 against Doane at the 2009 NAIA Tournament, single-season digs (561 in 2010), and her 1,585 career digs is second-best all-time at LCSC. She was a four-time Frontier Conference All-Academic selection. She received her bachelor's degree in Business Administration from LC State in 2011.

Hinrichs is a native of Pullman, Wash., and was a volleyball, basketball and softball standout at Pullman High School. She earned three varsity letters playing volleyball for Greeny at PHS where the Greyhounds accumulated an 84-12 record. She earned first-team All-Great Northern League honors as well as all-state honors as a junior and senior. The Pullman volleyball team won its first state volleyball championship in 2005 and placed in the top eight in 2006 and 2007. Hinrichs was a guard on the basketball team and led squad to third-place finish at state her junior year and to the league title as a senior. She started all four years at shortstop on the PHS softball team, earning second-team all-league honors her first year two years and then first-team honors her final two years. She was voted the softball team's MVP three times and an all-state selection as a senior.

Hinrichs was named Pullman High's Female Athlete of the Year in 2007 and was awarded the Jessica Clark Memorial Scholarship. In addition to athletics, she was the ASB Vice President and a member of the Athletic Council.

Hinrichs' father and grandfather are Washington State alums. Father Phil pitched for Cougar baseball in 1978 and 1979 and went on to play in the San Francisco Giants organization. Grandfather Bob ran the 120yd hurdles for the WSU track team. Older brothers Phil Jr. and Kyle also attended WSU with Phil competing on the cross country and track teams, and Kyle on the baseball team.



James Dorr Volunteer Coach

James Dorr became a volunteer coach at Washington State University during the summer of 2015 bringing with him experience as a collegiate player and club coach.

Dorr lettered four years as an outside hitter and libero on the men's volleyball at Limestone College

(Gaffney, South Carolina), an NCAA Division II institution. He was a two-time Conference Carolinas All-Academic team selection. After receiving his bachelor's degree in psychology from Limestone College in 2013, Dorr came to Pullman to pursue his master's degree and worked in the Student Recreation Center. He played on the WSU Men's Club team and coached multiple volleyball camps as well as for the Palouse Area Club Volleyball U14 team.

An East Valley High School (Spokane Valley) graduate, Dorr played basketball and competed in track and field. He played forward on the basketball team and was known for his rebounding abilities. He threw the discus and shot put for the Knights' track team and advanced to the Washington State Inter-scholastic Activities Association (WIAA) state championships in both events. He was a four-year team manager for the EVHS girls' volleyball program, working for the legendary coach and his father, the late Jim Dorr.

Dorr was an outstanding scholar and was named his high school's Foreign Language Student of the Year and was a Spokane Scholar nominee for World Languages. He graduated with a 4.0 GPA, was his class valedictorian, and was named EVHS Male Scholar Athlete of the Year as a senior.

While in high school, Dorr played also play boys' club volleyball. He was an outside hitter and right side hitter for the Seattle Space Needle Volleyball Foundation Club, helping the program to a 10th place finish at the 2009 national tournament in Atlanta. He was also an outside hitter on the High Performance Continental Team.

Dorr completed his masters' degree in Counseling Psychology at WSU in the spring of 2015.



Washington State 2015 Volleyball Coaching Staff

(L-R): James Dorr volunteer coach, Shannon Hunt assistant coach, Jen Greeny head coach, Burdette Greeny assistant coach, and Katie Hinrichs coordinator of operations.



#20 Hailey Bethune

Outside Hitter

6-0, Junior

Stockton, California

Lincoln High '13

Northern California Volleyball Club

Major: General Medical Science

BETHUNE'S WSU CAREER. SOPHOMORE (2014):

Played in 18 sets this season...season-best seven kills and two blocks in 3-1 win at Notre Dame 9/5...four kills, three blocks in 3-2 win over Cal Poly 8/30...missed on-court action after Oct. 10 due to illness.

FRESHMAN (2013):

Pac-12 All-Freshman honorable mention team selection...came on strong in last half of season after a limited early action due to a concussion...played in 61 sets this season...had four kills, hit .667 vs. Jackson State 9/13...tallied eight kills and two blocks at Colorado 10/6...seven kills and one block at No. 4 USC 10/25...career-high 12 kills (.238) with three blocks and 13.5 points in five-set loss to Colorado 11/1...had 10 kills and two blocks in 3-2 win over No. 4 USC 11/17...had career-high four blocks in win at No. 23 California 11/24

BETHUNE'S HIGH SCHOOL CAREER.

Earned four varsity letters at Lincoln High in volleyball for coach Gabe Leal...Trojans' volleyball teams won three San Joaquin Athletic Association (SJAA) championships in four years...SJAA honors include Newcomer of the Year in 2009, Outside Hitter of the Year in 2011, and MVP in 2010 and 2012...named Stockton Record's All-Area second team as freshman, first team as sophomore and junior and Player of the Year as senior in spite of missing first part of season with fractured right foot and stress fracture in left foot...named a Pre-Volleyball.com Senior Ace...led Lincoln HS to an undefeated 2012 season with 5.5 kills per set...selected to USAV Youth A2 Team...Northern California Volleyball Club member with six consecutive Junior Olympic appearances...won bronze medal at 2012 JO 18s national tournament.

PERSONAL. Born in January 1995, in Franklin, Penn...father Scott is an orthopedic surgeon who rowed at the University of Western Ontario...mother Denise is a teacher/homemaker...older sister Stephanie played volleyball at Claremont McKenna College...overall GPA of 4.27...principal's honor roll four years...earned four academic letters...AP Scholar...served as Academic and Life Skills mentor to freshmen and AP Statistics tutor...majoring in General Medical Science at WSU.



#13 Olivia Coale

Defensive Specialist

5-6, Freshman

Vancouver, Washington

Skyview High '15

ExcelNW Volleyball Club

Major: Nursing

COALE'S HIGH SCHOOL CAREER. Earned seven varsity letters at Skyview High in Vancouver, Wash...four for tennis coach Jay Gowen...four for volleyball coach Kristen Hoffman...four-year scholar-athlete...as a member of Skyview tennis team, squad was state runner-up in 2012 and champions in 2013...earned all-league tennis first team honors senior year...advanced to state in doubles...played Premier Club Soccer and was on 2009 state P1 finalist team that went on to compete at Far West Regionals...named All-Greater Saint Helens League first team libero as senior after second team selection as junior...named team MVP as senior...member of Excel NW Volleyball Club...played for coaches Lisa Van Sickle and Gary Van Sickle from 2011-13...racked up championships at the 2011 Phoenix Festival in 14U, 2012 USAV Junior National tournament in 15U, 2013 CEVA Regional Platinum and USAV Junior National tournament in 16U...played for coach Jessie Uribe on 18U Rox team in 2014...finished fifth at CEVA Regional tournament.

PERSONAL. Born in December 1996, in Vancouver, Wash...father Ned is an orthopedic surgeon...mother Marty is a radiologist...older brother Ted...older sister Ellie...enjoys surfing and soccer...earned Scholar-Athlete awards for tennis and volleyball all four years...plans to major in nursing at WSU.



#3 Haley DeSales

Outside Hitter

6-0, Freshman

Burbank, California

La Salle High '15

Club West Volleyball Club

Major: Undecided

DeSALES' HIGH SCHOOL CAREER. Earned four varsity letters at La Salle High in volleyball for coach Tiare Tuitama...led the Lancers to three consecutive undefeated league seasons and back-to-back CIF Division IA Championships...MaxPreps 2014 preseason All-American and Nike's Tournament of Champions "Super Star"...two-time All-Del Rey first team selection...two-time CIF Division IA Player of the Year...two-time All-Area Player of the Year...Prepvolleyball.com Sophomore of the Year national finalist in 2012...Prep Volleyball.com All American...Max Preps Junior All American in 2013...led La Salle with 634 kills and hit .361...also led the Lancers with 55 aces, 89 blocks and 438 digs...member of the Club West Volleyball Club...Junior National all-tournament selection in the 15-Open and the 17-Open divisions.

PERSONAL. Born in December 1996, in Burbank, California...father Rob is a film editor...mother Teri is the director of Forza1 West...one younger brother, Justin...grandfather Richard Knapp played football at UCLA...earned three scholar athlete awards...enjoys creating art in spare time...undecided on major area of study at WSU.



#22 Kyra Holt

Outside Hitter

6-1, Junior

Hercules, California

Albany High '13

Payes Performance Volleyball Club

Major: Human Development

HOLT'S WSU CAREER. SOPHOMORE (2014): Led team with 3.38 kps and 3.81 pps, both 10th-best in Pac-12...12 double-doubles this season...tallied 19 kills, hit .472 and had 10 digs in 3-2 come-from-behind win vs. Cal Poly...tallied three aces vs. No. 19 USC 10/3...23 kills, 12 digs and two aces versus No. 11 Oregon 11/9 after four blocks and 19 kills at No. 11 Oregon 10/10...career-high 21 digs at No. 20 USC 11/2...Holt's rankings in WSU Single-Season Records include: kills - 5th, 479 (2013); attack attempts -3rd, 1316 (2013) and 10th, 1195 (2014); and points - 2nd, 557.5 (2013) and 10th, 442.0 (2014)...Career Stats: 871 kills; 2,511 attack attempts; 590 digs; and 999.5 points is eighth-best in WSU all-time records.

FRESHMAN (2013): AVCA PACIFIC NORTH REGION FRESHMAN OF THE YEAR...All-Pac-12 Honorable Mention...Pac-12 All-Freshman First Team...name pronounced kai-rah...MVP of Army Black Knights Invite (49 kills, .398 in three matches)...named Pac-12 Freshman Player of the Week Sept. 2-8 for Cougar Challenge (51 kills, .294, 5 aces, 39 digs, 6 blocks)...named MVP of Sam Houston State Invite (44 kills, .388 hpct, 27 digs, 8 blocks)...career-high 19 digs vs. Montana...26 kills (.308), plus 11 digs and six blocks in 3-2 win at Oregon State 9/27... named Pac-12 Freshman Player of the Week Oct. 28-Nov. 3 after leading team in 3-0 win over Utah and 3-2 loss to Colorado... named Pac-12 Freshman Player of the Week Nov. 11-17 after leading team in 3-2 win over No. 4 USC and 3-2 loss to UCLA...named Pac-12 Freshman Player of the Week Nov. 18-24 after a career-high 28 kills (.304) in 3-2 come-from-behind upset win at No. 23 California...tallied double-digit kills in 29 of 33 matches to date...3.89 kps was seventh-best in Pac-12, 53rd-best nationally...4.53 pps

was seventh-best in Pac-12, 40th-best nationally...career-high four aces vs. Nevada...0.28 aces per set was eighth-best in Pac-12...12 double-double matches was 11th-best in Pac-12 this season and tied for sixth-best among all freshmen nationally...Holt's rankings in WSU single-season records - KILLS: 5th - 479; ATTACK ATTEMPTS: 3rd - 1316; and POINTS: 10th - 557.5.

HOLT'S HIGH SCHOOL CAREER. Earned varsity letters at Albany High in volleyball for coach Roger Worsely...three-time MVP of the Bay Shore Athletic League (BSAL)...led Albany HS Cougars team to two BSAL titles...team also won North Coast Section title in 2011...selected MVP of NCS and of North Coast Section Div. III...named to all-state Div. III team...two-time East Bay Sports Player of the Year...named to the 2012 Under Armour High School national All-America honorable mention team...ranked 44th in PrepVolleyball.com's Top 100 players in the nation...named a PrepVolleyball.com Senior Ace...played on Payes Performance Volleyball Club for coach Jennifer Canevari Agresti, a WSU letterwinner (1995-97)...Payes team finished third out of 32 teams in the 17-Open field at the 2011 USA Junior National Championships....Holt one of 15 players selected to the USAV Junior National All-Tournament Team...also recruited by Colorado State, Dayton, Miami (FL), and TCU.

PERSONAL. Born in May 1995, in Berkeley, Calif...father Howard is a fire captain who played basketball at UC Riverside and professionally in Malta...mother Patricia is retired...older brother Kacey...active in Black Student Union at Albany HS...majoring in Human Development.



#18 Ella Lajos

Middle Blocker

6-3, Freshman

San Jose, California

Valley Christian High '15

Encore Volleyball Club

Major: Marketing

LAJOS' HIGH SCHOOL CAREER. Earned four varsity letters in volleyball at Valley Christian High under coach Jeff Kim...led the VCHS Warriors to the 2013 West Catholic Athletic League Championship, the Central Coast Sectional championship for the second consecutive year, the Northern California Sectional Championship, and the California State championship...Warriors ranked third in California and sixth in the nation junior year...two-time All-WCL second team honoree... San Jose Mercury News All-Region team honorable mention selection...National Christian School Athletic Association Far West Super-Region team...tabbed most athletic middles in the 16s age group by PrepVolleyball.com...member of both USAV Youth National A2 and A1 Teams... on runner-up squad at the USAV High Performance Championship in the Girls International Youth Division...as a senior, chosen for the Western Catholic Athletic League second team...club volleyball as a freshman, member of the Payes Performance 15 Black that finished 14th at the USAV Junior Nationals Open...sophomore year played for Red Rock 16 Black with fifth place finish at USAV Junior Nationals Open...junior year played for Encore earning a USAV Junior Nationals American bid.

PERSONAL. Born in April 1997, in San Jose, California...father Stephen is a technical consultant...mother Kathleen is an educator...planning on majoring in marketing at WSU.



#14 Haley MacDonald

Setter

6-0, Junior

Bothell, Washington

Jackson High '13

Island Thunder Volleyball Club

Major: Nursing

MACDONALD'S WSU CAREER. SOPHOMORE (2014): Southpaw setter...tallied 50 assists in 3-1 win over W. Michigan 9/6...career-high 57 assists vs. Idaho 9/18...had 48 assists and career-high seven blocks in 3-2 come-from-behind win over Cal Poly 8/30...49 assists, 10 digs and two blocks vs. No. 19 USC 10/3...11.05 assists per set was fourth-best in Pac-12 and 29th-best nationally...season total of 1,348 assists is 16th-best in NCAA, and ninth on WSU Single Season records...1,572 career assists is 10th-best on WSU all-time records...named to 2014 Pac-12 All-Academic honorable mention.

FRESHMAN (2013): Southpaw...saw action in 46 sets of 25 matches this season...had 38 assists, one kill and one block in win over No. 16 Arizona State 10/11...next night had 34 assists, two kills, eight digs and two blocks vs. Arizona 10/13...had 33 assists with career-high 13 digs and three kills in upset win over No. 4 USC 11/17...aggressive setter...changed the pace of the play and landed some left-handed dumps.

MACDONALD'S HIGH SCHOOL CAREER. Earned four varsity letters at Henry M. Jackson High in volleyball for coach Ashley Allen...along with fellow WSU freshman Emmy Allen led Timberwolves to third place finish at the 2012 Washington 4A State Championship Tournament...voted onto all-state first team...also on Jackson HS teams that won the state 4A championship in 2010, placed fourth in 2011 and eighth in 2009...four-time All-Wesco first team selection...named to Seattle Times 2011 All-Star team...Everett Herald's All-Area selection to second team as freshman and first team next three consecutive years...PrepVolleyball.com Sophomore

79...named a PrepVolleyball.com's Senior Ace...named to the 2012 Under Armour High School national All-America honorable mention team...in club action played for Washington Volleyball Academy, University Place, All-Out, and Island Thunder Volleyball Clubs...also recruited by Purdue, North Carolina, South Carolina, and Oregon State among others.

PERSONAL. Born in January 1995, in Bellingham, Wash...father Robert is a Boeing program manager...mother Jennifer is a physical therapist...younger brother Matthew...three-years on honor roll...majoring in Human Development at WSU and will pursue a nursing career.



12 Claire Martin

Middle Blocker

6-4, Freshman

Bremerton, Washington

Bellarmino Prep '15

Saddleback Volleyball Club

Major: Computer Science or Engineering

MARTIN'S HIGH SCHOOL CAREER. Earned seven varsity letters at Bellarmine Preparatory School... three in volleyball for coach Jody DeGroot and four in basketball under coach Kevin Meines... led the Lions volleyball squad to three consecutive Narrows League Championship and three Washington State 4A championship titles... Lions were 35-0 in 2013 and ranked fourth nationally by MaxPreps and 14th nationally by PrepVolleyball.com... junior season averaged 1.2 blocks per set average, setting a school record and fourth-best in Washington... two-time All-Narrows League first team, Tacoma News Tribune All-Area first team and made the Tacoma Weekly's All-City team... in basketball, was the league's 2015 Defensive MVP and first team all-league selection as a junior and second-team selection as a sophomore... as a junior averaged 13.4 points per game, 12.9 rebounds per game (fifth-best in state), and 4.5 blocked shots per game (second-best in state)... named to Tacoma Weekly's All City Basketball First Team after Bellarmine won a league title and State playoff appearance... selected Tacoma News Tribune All-Area Female Athlete of the Year for 2014-15... played club volleyball for coach Paula Schwan on the Kent Junior Volleyball Club and won the 2013 Puget Sound Regional as well as the 16s Patriot Division at the USAV Junior National Championships... in 2014 KJVC, under coach Bill Caillier, won the Puget Sound Regional Bid Tournament.

PERSONAL. Born in December 1996 in Bremerton, Washington... father Tim is a nuclear engineer... mother Mary Raese Martin is a member of the University of Idaho Hall of Fame after holding the school's basketball record for career-scoring for 20 years and played professionally in

France... younger brother Jack... three aunts and two uncles attended WSU... National Honor Society Member... enjoys drawing, photography and baking... interested in computer science or engineering as a major.



#10 Taylor Mims

Middle Blocker

6-3, Freshman

Billings, Montana

Billings Senior High '15

Columbia Juniors Volleyball Club

Major: Bio Medical Sciences

MIM'S HIGH SCHOOL CAREER. Earned ten varsity letters at Billings Senior High...four in volleyball under coach Jeff Carroll, two in basketball under coach Drew Haws and four in track under coach Jerry Weik...Montana's 2014 Gatorade Volleyball Player of the Year...selected to the 2014-15 PrepVolleyball.com Under Armour High School Volleyball All-America second team...led Billings team to three consecutive championship titles after a runner-up finish freshman year...three time all-state player with an honorable mention and back-to-back first team selections...named No. 80 on 2015 PrepVolleyball.com's Senior Aces Top 100 Players in America...three all-conference honors with a second team nod as well as two consecutive first team honors...led Class AA in attack efficiency (.310) and kills per set (4.53) and fourth in blocks per set (1.11)...during basketball named to 2014 Montana Class AA state all-tournament basketball team as well as the Broncs placed third at state in 2014...in track, two-time state high jump champ...earned sixth place for the long jump for both her sophomore and junior year...helped Broncs earn three consecutive state track titles...only third volleyball player from state of Montana to play at a Pac-12 school.

PERSONAL. Born in August 1997, in Billings, Montana...father Jason is a physical fitness trainer...mother Nicole is a counselor...has one younger brother, Gregory, and younger sister, Rosa...enjoys scrap booking, training horses and babysitting...planning to major in bio medical sciences at WSU.



#21 Casey Schoenlein

Outside Hitter

6-5, Sophomore

Bellevue, Washington

Newport High '14

Seattle Juniors Volleyball Club

Major: Communication

SCHOENLEIN'S WSU CAREER. FRESHMAN (2014): Injured thumb during preseason practice...played in 22 sets in 2014...seven kills and hit .462 with four blocks vs. No. 23 Loyola Marymount 9/19...at No. 1 Stanford had four kills and hit .429...subbed in late vs. No. 11 Oregon for two strong kills on two attacks.

SCHOENLEIN'S HIGH SCHOOL CAREER. Earned nine letters at Newport High...four as an outside hitter for volleyball coach Steve Trachy...four as a center for basketball Travis Whitaker...one as a goalie for water polo coach Farrah Kunkel...three-time All-KingCo-4A league honorable mention selection in basketball...in 2012-13 season led state in blocked shots (120) and fifth in the state in rebounds (257)...in 2013-14 season led state in blocked shots with a 5.0 blocks per game average and had the fifth-best assists average of 3.5 per game...also a member of 2012 state champion water polo team and was named to the all-state first team...on the volleyball court, was four-year All-KingCo 4A volleyball selection and a two-time league Most Valuable Player...led the Knights volleyball team to three consecutive league titles...Newport finished fourth at the 2013 Washington state 4A Championships after a seventh-place finish in 2011...tallied four consecutive state 4A Championship tournament appearances which is unprecedented in school history...earned the individual Sportsmanship Award at two state volleyball tournaments...selected to the Seattle Times 2012 and 2013 All-Area Volleyball Teams...summer of 2011 won a first place qualifier for the USA Junior Beach Tour...nationally was a PrepVolleyball.com's Top 50 Junior Recruits for 2012 and was No. 58 on the PrepVolleyball.com's 2013 Senior Aces list...

senior year stats included 343 kills, 205 digs, 77 aces and 28 blocks...attended USA Volleyball A2 High Performance Camp in summer 2013...two-year member of the Seattle Juniors Volleyball Club playing for coach Shannon Pratt.

PERSONAL. Born in March 1996 in Bellevue, Wash...father Gary is an F.B.I. agent who was a competitive swimmer at USC...mother Kris works at the YMCA...older sister Braden...older brother Grant is currently a student at WSU...high-achiever in the classroom with a 3.93 grade point average...majoring in Communication/Journalism and Media Production at WSU.



#2 Kate Sommer

Libero/Defensive Specialist

5-4, Senior

Pacific Palisades, California

Lighthouse Christian Academy '12

Sunshine Volleyball Club

Major: Human Development

SOMMER'S WSU CAREER. JUNIOR (2014): Three-year starter at libero...ALL-TOURNAMENT AT NOTRE DAME GOLDEN DOME INVITATIONAL...ALL-TOURNAMENT AT COUGAR CHALLENGE...season-best 32 digs at No. 17 Arizona State 10/19 - fifth-best in Pac-12 in 2014...25 digs at Oregon State 10/11...double-digit digs in 28 of 30 matches in 2014...4.27 digs per set is fifth-best in Pac-12...521 digs in 2014 is fourth-best on the WSU single-season list...career-high 36 digs in 3-2 come-from-behind win at No. 23 California 11/24/13 - second-most in WSU all-time records...in 2014 had double-digit digs in 30 of 32 matches; in 2013 had double-digit digs in 27 of 33 matches...1,475 career digs is second-best in WSU all-time.

SOPHOMORE (2013): Second year starter at libero...4.02 dps average led team and was eighth-best in Pac-12...tallied 21 digs at Oregon State 9/27 and again at Utah 10/4...landed three aces vs. Alabama 8/31...served back-to-back aces in 21-19 fifth-set win over No. 4 USC...had a career-high 36 digs in 3-2 come-from-behind win at No. 23 California 11/24...36 digs is the second-most in WSU all-time records and tied for most in Pac-12 this season...double-digit digs in 27 of 33 matches this season...holds two spots on WSU's single season digs records - 495 digs in 2013 is fifth-best and 459 digs in 2012 is seventh-best...also listed twice on single season digs per set list - 4.06 dpg 2012 is sixth and 4.02 dps in 2013 is seventh...954 career digs is 10-best in WSU all-time...4.04 dps career average is fourth-best in WSU all-time records.

FRESHMAN (2012): Sole freshman on squad...second recruit for Greeny's WSU program...named

to Cougar Challenge all-tournament team...led team and 6th in Pac-12 at 4.06 dps and 7th in Pac-12 ONLY matches with 4.29 dps...known for hustle and jaw-dropping digs...served three aces vs. No. 4 Oregon 11/17...tallied 29 digs vs. Oregon State 11/16...had 25 matches with double-figure digs...459 digs this season is 6th-best in WSU's single season all-time records.

SOMMER'S HIGH SCHOOL CAREER. Earned three varsity letters as an outside hitter and defensive specialist for volleyball coach Emily Hamilton...three-time All-Coastal League selection and was named the league most valuable player as a junior...earned All-California Interscholastic Federation (CIF) accolades as a junior...began 2011 season named one of the top liberos on PrepVolleyball.com's Senior Aces, a list of the top 150 high school players in the country...competed at the Junior Olympics for the past five years as a member of the Sunshine Volleyball Club.

PERSONAL. Born in March 1994 in Santa Monica, Calif...father Harrison is a lawyer...mother Pamela is a teacher...older brothers Daniel and Clayton...older sisters Lauren, Lindsey and Stephanie...Lindsey played volleyball at Concordia and Stephanie played volleyball at Cal State Fullerton...majoring in Human Development at WSU.



#17 Tani Stephens

Defensive Specialist

5-8, Junior

Albany, Oregon

West Albany High '13

Oregon NW Juniors Volleyball Club

Major: Sports Science

STEPHENS' WSU CAREER. SOPHOMORE (2014):

Played in 111 sets in 2014...season-high 13 digs and landed an ace to close final set in 3-1 win at Notre Dame 9/5...had four digs in 3-2 come-from-behind win over Cal Poly 8/30...career-high two kills and 2.0 points vs. Portland State 9/19...another 13 digs and one ace vs. Oregon State 11/6...named to the Pac-12 All-Academic honorable mention team.

FRESHMAN (2013):

Saw action in 105 of 123 sets in 2013...career-high three aces in win over No. 16 Arizona State 10/11...career-high 16 digs vs. Arizona 10/13...three aces again in 3-0 win over Utah 11/2...had 12 digs in 3-2 upset win over No. 4 USC 11/17...0.20 aces per set is third-best on team.

STEPHENS' HIGH SCHOOL CAREER.

Earned four varsity letters as a setter and outside hitter at West Albany High in volleyball for coach Kelli Backer...named 2012 Gatorade State Player of the Year for the state of Oregon...led Bulldogs to 2012 Oregon 5A state championships after being runners-up in 2011, and third and fourth place freshman and sophomore years...named co-MVP of the 2011 and 2012 state championship matches...named to the All-State Tournament first team twice and the second team once...Bulldogs were undefeated in Mid-Willamette Valley League play for three consecutive seasons and only lost one match in 2009...three-time MWV League MVP....in beach volleyball was Juniors 16U Champion, Juniors 18U Champion, Women's AA Quads Champion, Women's AA Double Champion, and Advanced Coach/Player Champion at the Seaside (Oregon) Beach Volleyball Tournaments from 2009-12...played on Oregon Northwest Juniors 18 Air Elite Club team, coached by Rodney Jones, that was

the 2012 Regional champions...also recruited by Oregon State, Portland State and Montana State.

PERSONAL.

Born in June 1995, in Corvallis, Ore...father Daniel is a concrete contractor who played basketball at George Fox College...mother Tina is an accountant...older brother Tye...3.74 GPA...National Honor Society...AIM Leadership, FLASH - Freshman Learning and Seniors Helping, History Student of the Month...majoring in Sport Science at WSU.



#6 Jocelyn Urias

Middle Blocker

6-3, Freshman

Tijuana, Mexico

José Vasconcelos Bilingual School '15

Mexican National Team

Major: Undecided

URIAS' PRE-WSU CAREER. Three-year member of the Mexican Junior National team...selected to the Mexican National Team for competition at the 2015 FIVB (Federation Internationale de Volleyball) World Grand Prix...team did not advance from preliminary rounds in pool play...played three years of high school volleyball at Preparatoria José Vasconcelos in Tijuana, for coach Luz Maria....also played for Baja California Club team coached by Estanislao Matías Vachino...named the MVP of the 2015 Copa Federacion (Federation Cup), a qualifying tournament for the Liga Mexicana de Voleibol (LMV).

PERSONAL. Born February 1996 in Tijuana, Mexico...undecided on major area of study at WSU.



#11 Ashley Vander Tuig

Outside Hitter

6-2, Junior

Tulare, California

Central Valley Christian High '12

Major: General Sciences

A. VANDER TUIG'S WSU CAREER. REDSHIRT SOPHOMORE (2014): Played in 16 sets in 2014...three kills and three blocks vs. Wyoming 8/29...three kills on four attacks with no errors for .750 hpct. versus IUPUI 9/5...transferred from Azusa Pacific University in summer 2014.

A. VANDER TUIG'S PRE-WSU CAREER. At Azusa Pacific University, freshman season started 31 matches in 2012 and led the team with 131 blocks (1.12 bps) which ranked second in the Pacific West Conference...had 222 kills (1.90 kps) and a .293 hitting percentage...named to All-PacWest third team...sophomore season played in only five sets (2 matches) before injury ended season and she redshirted...transferred to WSU in summer 2014.

A. VANDER TUIG'S HIGH SCHOOL CAREER. Earned nine letters in four sports at Central Valley Christian...three as a middle hitter for volleyball coach Meghan Warkentin...two in basketball for coach Michelle McNiece...three in track as a high jumper and triple jumper for coach Brian Gilbert...one in swimming for coach Dana Gilkey...earned All-Central Sequoia League (CSL) first team and all-county honors in volleyball three consecutive years....tabbed the Visalia Times Delta and Fresno Bee Player of the Year...named CSL most valuable player as a senior after leading her team to a 31-6 overall record...squad was undefeated in league play and CIF Central Section champions all three years....recognized as the National Christian Schools Athletic Association as Player of the Year...during prep basketball playing career was team and CSL MVP and defensive player of the year senior season...named Visalia Times Delta Athlete of the Year.

PERSONAL. Born April 1994 in Upland, Calif...father Richard is a dairy farmer who played basketball at Azusa Pacific...mother Melanie is a homemaker...younger sisters Katelyn, Kendall and Brooklyn...younger brother Austin...majoring in General Sciences.



#7 Katelyn Vander Tuig

Setter

5-10, Freshman

Tulare, California

Central Valley Christian High '15

Major: Undecided

K. VANDER TUIG'S HIGH SCHOOL CAREER.

Earned nine varsity letters at Central Valley Christian...three letters as a setter for volleyball coach Meghan Warkentin...four letters as a sprinter for track coach Mike Hackbarth...one letter in basketball for coach Hackbarth...one letter in cross country for coach Scott Kostelyk...competed at the state cross country championships as a freshman...Cavaliers volleyball team won the 2013 CIF Central Section Division III state and then captured the 2014 CIF Central Section Division II state championship for the school's 12th championship in the past 16 years...named first team All-Central Sequoia League in 2014...selected to 2014 Times-Delta/Advance-Register All-Tulare Country second team.

PERSONAL. Born in June 1997, in Visalia, Calif... name pronounced Vander t-eye-g...father Richard is a dairy farmer who played basketball at Azusa Pacific...mother Melanie is a homemaker...older sister Ashley, is a junior on the WSU volleyball team...younger sisters Kendall and Brooklyn...younger brother Austin...enjoys waterskiing...undecided on major area of study at WSU.



#5 McKenna Woodford

Outside Hitter

6-4, Freshman

Chandler, Arizona

Hamilton High '15

Club One Platinum Volleyball Club

Major: Undecided

WOODFORD'S HIGH SCHOOL CAREER. Earned a total of five varsity letters...four in volleyball and one in basketball...spent freshman and sophomore year at Sedona Red Rock High where she played volleyball under coach John Parks and basketball under coach Tina Hawes...junior and senior year attended Hamilton High in Chandler, Arizona, and played volleyball under coach Sharon Vanis...earned national recognition and became one of the top 150 prep players landing her a spot on the honorable mention team for the 2014-15 Under Armour High School All-America team...named to PrepVolleyball.com No.62 on the 2015 Senior Aces top 100 players in the nation after earning a spot on their Sophomore 79 list in 2012...freshman year she was an all-state honorable mention...sophomore year led team to be Division IV Champions...named Arizona Div. IV Player of the Year, named to all-state team, and named to all-section Player of the Year and first team...junior and senior year led Hamilton HS to runners up in Division I State Championship...as a junior named to Div. I all-state first team and All-Section first team...played with Club One Platinum Volleyball Club under coach Kelsey Lueders-Girts, taking fifth place at nationals...selected to the USAV National Junior Championships 16 Gold Division all-tournament team and to the 18 Gold Division all-tournament team.

PERSONAL. Born in August of 1997, in Columbus, Ohio...father Brad is an orthodontist...mother Barbara is a nurse who played basketball at the University of Minnesota...younger brother Britton...older sister Meredith...Woodford maintained a 4.0 throughout high school...undecided on area of study at WSU.

Washington State 2015 Volleyball TV/Radio Roster



2 Kate Sommer
Lib 5-4 Sr.
Pacific Palisades, California



3 Haley DeSales
OH 6-0 Fr.
Burbank, California



5 McKenna Woodford
OH 6-4 Fr.
Chandler, Arizona



6 Jocelyn Urias
MB 6-3 Fr.
Tijuana, Mexico



7 Katelyn Vander Tuig
S 5-10 Fr.
Tulare, California



10 Taylor Mims
MB 6-2 Fr.
Billings, Montana



11 Ashley Vander Tuig
MB 6-2 Jr.
Tulare, California



12 Claire Martin
MB 6-4 Fr.
Bremerton, Washington



13 Olivia Coale
DS 5-6 Fr.
Vancouver, Washington



14 Haley MacDonald
S 6-0 Jr.
Bothell, Washington



17 Tani Stephens
DS 5-8 Jr.
Albany, Oregon



18 Ella Lajos
MB 6-3 Fr.
San Jose, California



20 Hailey Bethune
OH 6-0 Jr.
Stockton, California



21 Casey Schoenlein
OH 6-5 So.
Bellevue, Washington



22 Kyra Holt
OH 6-1 Jr.
Hercules, California



Jen Greeny
Head Coach
Fifth Year



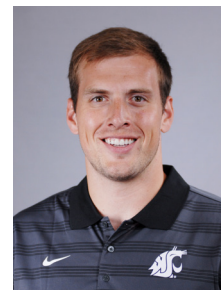
Burdette Greeny
Assistant Coach



Shannon Hunt
Assistant Coach



Katie Hinrichs
Operations Coordinator



James Dorr
Volunteer



Cougar Volleyball: A History of Success

The Washington State volleyball program has a proud and distinguished history of postseason competition. Playing in the Pac-12, the “Conference of Champions,” provides WSU with top nationally-ranked opponents on a weekly basis throughout the season. The Cougars have participated in the NCAA Championship Tournament ten times, with two Elite Eight appearances.

Current Head Coach Jen Greeny and her staff have worked tirelessly for the past four seasons to rebuild the program back to national prominence with a nationally-ranked recruiting class of highly-skilled players. To that end, the Cougars ranked No. 17 in recruiting class rankings from 2013-15 according to PrepVolleyball.com, which includes two classes ranked among the Top 21: No. 14 in 2013, and No. 21 in 2015, with the 2014 class garnering honorable mention accolades. Among WSU recruits are five PrepVolleyball.com Top 100 players and two Gatorade State Players of the Year.

The Cougars compete in the country’s strongest volleyball conference, the Pac-12 Conference, where an NCAA record of 10 teams competed in the NCAA Championship tournament last year. The 2014 season found WSU facing 12 NCAA Championship tournament teams in 20 of its 32 matches, with the Cougars leading the nation in sets won versus Top 25-ranked or receiving votes teams by a non-ranked team. WSU’s 2014 regular season schedule was rated the fourth most difficult among the Pac-12 member schools (Pablo rankings). In four years, Greeny’s WSU teams have posted a 40-7 non-conference record.

The 2013 Cougars volleyball team achieved a winning record for the first time in four years, finishing 18-15 overall, 5-15 in Pac-12. WSU scored impressive wins over No. 16 Arizona State, No. 4 USC and at No. 23 California. The Cougars were led by Kyra Holt, the AVCA Pacific North Region Freshman of the Year, All-Pac-12 honorable mention and Pac-12 All-Freshman first team member. During the 2013 season, the Cougars had five true freshmen on the court many times - freshmen from the 14th-best recruiting class in the nation (PrepVolleyball.com). Senior libero Kate Sommer, Greeny’s first true freshman recruit, led the team in digs and was eighth-best in the Pac-12.

Going back nearly four decades, the 1977 WSU team participated in the Association for Intercollegiate Athletics for Women (IAIW) National Championships. The Marie Matson-coached squad was the regional champions but grabbed one win in five matches at the national tournament.

WSU’s first NCAA Championship Tournament appearance came in 1991, starting a streak of post-season play for head coach Cindy Fredrick’s teams. The No. 19 Cougars, led by All-Pac-10 selections Carrie Couturier and Keri Killebrew, traveled to Albuquerque and faced the No. 8 New Mexico Lobos, falling 3-1. The following year the Cougars were the top seed in the 16-team NIVC tournament in Kansas City. No. 20 WSU convincingly swept the bracket, winning the national title in 18-straight sets (six matches). WSU setter Keri Killebrew, a first-team All-Pac-10 selection, was the NIVC Most Valuable Player and became the first Cougar to earn All-America honors in volleyball.

In 1993, No. 21 WSU, led by All-Pac-10 selection Becky Howlett, defeated the University of San Diego 3-1 in the first round of the NCAA Championships in Provo, Utah. The crimson Cougars fell to the No. 4 BYU Cougars in the second round, 3-0. The 1994 NCAA tournament first round found No. 25 WSU, led by All-Pac-10 first team Sarah Silvernail, back in Albuquerque again with the No. 20 Lobos eking out a 3-2 victory on their home court.

The 1995 season found a very young Cougar team nicknamed the Baby Bombers (no seniors and only three juniors on the 14-member squad) finishing as the runners-up in the Pac-10 final standings. After being ranked as high as fifth-nationally - the highest national ranking for any WSU team up to that time - the Cougars were led by All-American Sarah Silvernail, All-Pac-10 selections Keren Oigman (first team), Stephanie Papke (honorable mention) and Jennifer Stinson (All-Freshman). WSU was ranked No. 11 going into the NCAA Championships and seeded third in the Pacific Region which accorded the Cougars a first round bye. WSU hosted an unranked Oral Roberts team in the second round and the older, internationally-experienced ORU team swept the Cougars in Pullman. Coach Cindy Fredrick was named the Pac-10 and AVCA District VIII Coach of the Year.

The most successful season in WSU volleyball history was the 1996 season. The Cougars had a 25-5 record, was the Pac-10 runners-up with the most conference wins ever (14), went undefeated at home in Bohler Gym (14-0) and was the first WSU women’s team in any sport to advance past the second round in an NCAA tournament. Led by All-American and Pac-10 Player of the Year Sarah Silvernail and All-American and All-Pac-10 setter Stephanie Papke, the No. 9 Cougars received a first round bye and then hosted No. 24 Kansas State taking a 3-1 win. At the Pacific Regional semifinals at Stanford, WSU defeated No. 6 Loyola Marymount 3-1 and advanced to the Elite Eight. No. 2 Stanford won the regional final 3-0, a payback for the Cougars’ first win over the Cardinal in 23 meetings a month earlier in the season. Stanford went on to win the national title while WSU finished No. 7 in the final AVCA national rankings.



The 1997 season marked the fifth consecutive year for WSU to participate in the NCAA Championship Tournament and the seventh consecutive year of post-season play. Ranked No. 11 nationally, WSU hosted the first and second rounds, defeating Lehigh 3-0 and No. 20 Colorado State 3-1 with All-Pac-10 selection Jennifer Stinson (now WSU Head Coach Jen Greeny) leading the way. The crimson and gray squad took on No. 8 Florida in the Central Regional Semifinals in Madison, Wis., falling in straight sets. Washington State saw NCAA Championship tournament action again in 2000 with current Cougar Head Coach Jen Stinson Greeny joining Cindy Fredrick as an assistant coach. All-Pac-10 selection LaToya Harris led the unranked Cougars to a 3-0 first round win over Tennessee at University Park, Penn. In the second round the Cougars fell to the defending national champions and No. 8 Penn State Lions, 3-1. Harris earned her second All-Pac-10 honors in 2001, leading the Cougars to another at-large berth to the NCAA Championship Tournament. WSU hosted No. 11 Hawai'i only to have the Wahine take the match 3-0.

The Cougars racked up a 24-8 record in the 2002 season that included a 3-1 defeat of No. 1 Stanford in Pullman. LaToya Harris grabbed her third All-Pac-10 award while Holly Harris, Adrian Hankoff, Kortney Jantaas and Chelsie Schafer were all named to the all-conference honorable mention team. Ranked No. 11, WSU traveled to Manhattan, Kan., and swept Oral Roberts in the first round and defeated No. 22 Kansas State 3-1. After a whirlwind of travel from Kansas back to Pullman to Gainesville, Florida, for the East Regional, the Cougars took on No. 6 Northern Iowa and after a 3-0 win moved back to the Elite Eight for the second time in school history. WSU gave the home team, the No. 5 Florida Gators, a good tussle but lost 3-1. WSU ended the season ranked No. 7.

The 2009 tournament bid marked the 10th trip to the NCAA Championship Tournament for the WSU volleyball program. Washington State joined seven other Pac-10 teams selected to play in the tournament giving more credence to the "Conference of Champions" title. Pac-10 Coach of the Year Andrew Palileo took the Cougars to Lincoln, Neb., for the first round, WSU falling to No. 20 Northern Iowa 3-0. Then freshman Rachel Todorovich led the Cougars with 15 kills, a .556 hitting percentage and 10 digs, and then sophomore Meagan Ganzer added 13 kills.

Head Coach Jen Greeny's NCAA experience as both a Cougar player and assistant coach gives her the experience to propel the Cougar volleyball team back into the NCAA Championships in the very near future.

WSU Volleyball NCAA Championships History

Year	Event	Results
1991	NCAA First Round	No. 8 New Mexico def. No. 19 WSU 3-1, at Albuquerque
1993	NCAA First Round	No. 21 WSU def. San Diego 3-1, at Pullman
	NCAA Second Round	No. 4 BYU def. No. 21 WSU 3-0, at Provo
1994	NCAA First Round	No. 20 New Mexico def. No. 25 WSU 3-2, at Albuquerque
1995	NCAA Second Round	Oral Roberts def. No. 11 WSU 3-0, at Pullman
1996	NCAA Second Round	No. 9 WSU def. No. 24 Kansas State 3-0, at Pullman
	NCAA Sweet Sixteen	No. 9 WSU def. No. 6 Loyola Marymount 3-1, at Stanford
	NCAA Elite Eight	No. 2 Stanford def. No. 9 WSU 3-0, at Stanford
1997	NCAA First Round	No. 11 WSU def. Lehigh 3-0, at Pullman
	NCAA Second Round	No. 11 WSU def. No. 20 Colorado State 3-1, at Pullman
	NCAA Sweet Sixteen	No. 8 Florida def. No. 11 WSU 3-0, at Madison
2000	NCAA First Round	WSU def. Tennessee 3-0, at University Park, Pennsylvania
	NCAA Second Round	No. 8 Penn State def. WSU 3-1, at University Park, Penn.
2001	NCAA First Round	No. 11 Hawai'i def. WSU 3-0, at Pullman
2002	NCAA First Round	No. 11 WSU def. Oral Roberts 3-0, at Manhattan, Kan.
	NCAA Second Round	No. 11 WSU def. No. 22 Kansas State 3-1, at Manhattan, Kan.
	NCAA Sweet Sixteen	No. 11 WSU def. No. 6 Northern Iowa 3-0, at Gainesville
	NCAA Elite Eight	No. 5 Florida def. No. 11 WSU 3-1, at Gainesville
2009	NCAA First Round	No. 20 Northern Iowa def. WSU 3-0, at Lincoln, Neb.

All-time Letterwinners

Annie Adams	2009	Alicia Erickson	1998	Conley Kipp	2009-10	Deirdre Runnette	1987-88
Jackie Albright	2006-09	Adetokunbo Faleti	2006-07	Mandy Kister	1977	Kelly Russell	2005
Emmy Allen	2013-14	Terry Fay	1977	Kim Kleven	1995-98		
Julie Ament	1986-87	Gwen Fernandez	1989	Kathy Kocins	1984-85	Maile Scarpino	2011-12
Elis Arias	1994-97	Donna Finney	1984-87	Kim Kohler	1981	Beverly Schaaf	1982-84
Ance Auzina	2002	Bree Flach	2008			Chelsie Schafer	1999-2002
		Michele Furlong	1984-85	Laurie Lamken	1983	Casey Schoenlein	2014
Denise Baez	1993			Brenn Larson	2002-03	Sally Schroeder	1985
Marijean Baird	1984	Meagan Ganzer	2008-11	Dion Leckie	1987-88	Cori Seale	1992-93
Cindy Baker	1985-88	Suzanne Geppert	1983-86	Kerry Lewis	1998-2001	Kim Seals	1975-77
Maryka Banta	1985	Carrie Gilley	1990-93	Jordan Levenseller	2010-11	Joyce Selveit	1976
Jen Barcus	2003-05	Marcelina Glab	2010-13	Stephanie Logan	2012-14	Kathy Sheedy	1981
Elena Bariechiecich	1983	Sheila Gluzer	2003	April Lott	2003-06	Sarah Silvernail	1993-96
Jeannette Barham	1976	Marjie Goddard	1983-85	Mary Luhrs	1998	Annie Sitter	1988-89
Betty Bartram	1990-92, 94	Angela Gotelli	1993-94	Shawna Lum	2011-14	Joni Skagen	1982
Zanda Bautre	2000-03	Sue Graham	1981	Nancy Lust	1981-83	Amy Small	2007-08
Krista Beightol	1990, 92-94	Katie Gray	1975-76	Teresa Lust	1982	Colleen Smith	1997-98
Cory Bergey	1991-92	Denise Green	1977-81	Kathy Lyon	1976-77	Jayne Smith	1976-77
B. Berry	1975	Melanie Greene	2003			Kate Sommer	2012-14
Hailey Bethune	2013-14	Shannan Griffin	1989-92	Haley MacDonald	2013-14	Lori Sorenson	1977
Chelsey Bettinson	2011-14	Susan Guest	1987	Haylee Mathis	2014	Liz Spear	2003-04
Alison Billingsley	2001-04			Cheryl McCleary	1975-77	Phelicia Sperrazzo	1986-89
Sara Biondi	2010	Kathi Hagemeyer	1983-84	Amanda McDonald	1995-96	Joy Sperry	1998-99
Shelly Birch	1986-87	Kelly Hankins	1990-91	Deb McGill	1977-79	Samantha Spink	1997-98
Missy Blackshire	1998-99	Adrian Hankoff	1999-2002	J. McPherson	1975	Tani Stephens	2013-14
Kelly Bohart	1978-80	Ver'Leea Hardaway	2011-14	Megan McManus	2011	Jennifer Stinson	1995-98
Renee Bordelon	2008-09	Holly Harris	1999-2002	Jessica Martin	1997	Anne Sugars	1976
Janet Bottenberg	1982	Jaicee Harris	2011-14	Nicole Martin	2004	E. Sugars	1975
Melissa Boyle	2000-01	LaToya Harris	1999-2002	Melissa Merkley	1994	Kali Surplus	2000-01
LaQué Branch	2002-03	Carly Hayashikawa	2004-06	Stacey Miller	1998-99		
Ashley Bristol	2003	B. Helgeland	1975	Kathleen Monda	2001	Brittany Tillman	2007-10
P. Brown	1975	Teresa Henning	1984-85	Fawnda Morris	1981-82	Jennifer Todd	2003-04
Rochelle Buell	1991-92	Debi Henry	1988			Rachel Todorovich	2009-12
McKenzie Burgess	2003-04	Jenny Herndon	1994-95	Paige Nelson	1995-96	Terry Tomich	1982-83
Oceana Bush	2009-10	Jennifer Herse	1979	Breann Nesselhuf	2008		
		Stacy Hoffman	1993	Pam Newton	1982	Heidi Urquhart	1977-79
Jessie Camp	2003-05	Stacey Holbrook	2003-04			Jill Urquhart	1979
Megan Camp	2002-04	Kyra Holt	2013-14	Keren Oigman	1994-97		
Jennifer Canevari	1995-97	Kristen Hovde	1989-92	Natalia Owens	2005	Ashley VanderTuig	2014
Kristen Carlson	2003	Becky Howlett	1992-93			Laurie Van Diest	1984-87
Gayle Christie	1984	Nikki Hubbert	1995	Stephanie Papke	1994-97	Yvonne Velasco	1976-77
Dee Coffin	1975	Diane Hunton	1979	Jalen Pendon	2005-06	Debra Voliva	1982-83
Carrie Couturier	1988-91	Faith Hutcherson	2007-10	Maureen Perez	2005-07	Lucie Vratnickova	1997-98
Maureen Cox	1992-93	Kelly Hyder	2006-09	Chani Phillips	1979-82		
Jan Cunningham	1975-76			Kathy Plotnikoff	1979-80	Stephanie Weishaar	2005-08
		Camryn Irwin	2011-13	Victoria Prince	2002	Beth Welch	1987-89
Gwen Davis	2005			Jean Prudy	1976-77	Darci Wellsandt	1990, 92-93
Laura Davis	1987	Kortney Jamtaas	1999-2002			Tara West	2006-07
Lisa Davis	1981-84	Kathy Jentoft	1978-81	Denna Rawie	1988-89	Jamie Wheat	1986
Lisa Debolt	1989	Brittany Johnson	2005-08	Kathleen Reeve	1987-88	Shannon Wyckoff	1994-97
Brittney Diaz	2001	Joanne Johnson	1991-93	Carla Reyes	1986-89		
Alex Diemer	2009	Kristen Johnson	1998-99	Mary Anne Rice	1981-84	Lisa Yensen	1990-91
Karen Donahou	1979			Kali Richards	2003		
		Kaleinani Kabalis	2010	Cassie Robbins	2006-09		
Lori Eastep	1994	J. Kauzlarich	1975	Margy Robinson	1979-81	Letterwinners from 1975-2014	
Taylor Ellingsen	2014	Kristin Kelley	2004	Emily Rooney	2008		
Linda Emtman	1982-83	Sue Kelso	1979-82	Kelly Rosin	2003-06		
Sue English	1975	Trina Kightlinger	1999-2000	Wendy Rouse	1995-97		
Nancy Engman	1976	Keri Killebrew	1990-92	Camila Rower	2000		
Te'Ara Epps	2005	Traci King	1987-89	Kimika Rozier	2008		



Cougar Volleyball Honors

All-Pac-10/12 Conference Teams

2013	Kyra Holt, Honorable Mention
2012	Jaicee Harris, Honorable Mention
2011	Meagan Ganzer, First Team
2010	Meagan Ganzer, Honorable Mention
2009	Renee Bordelon, Honorable Mention Cassie Robbins, Honorable Mention
2004	Jennifer Todd, Honorable Mention
2003	Zanda Bautre, Honorable Mention
2002	LaToya Harris, First Team Holly Harris, Honorable Mention Adrian Hankoff, Honorable Mention Kortney Jamtaas, Honorable Mention Chelsie Schafer, Honorable Mention
2001	LaToya Harris, First Team Adrian Hankoff, Honorable Mention Kali Surplus, Honorable Mention
2000	LaToya Harris, First Team Chelsie Schafer, Honorable Mention Kali Surplus, Honorable Mention
1999	LaToya Harris, Honorable Mention
1998	Wendy Rouse, Honorable Mention
1997	Jennifer Stinson, First Team Stephanie Papke, Honorable Mention
1996	Sarah Silvernail, Player of the Year Stephanie Papke, First Team Keren Oigman, Honorable Mention
1995	Sarah Silvernail, First Team Keren Oigman, First Team Stephanie Papke, Honorable Mention
1994	Sarah Silvernail, First Team
1993	Becky Howlett, First Team
1992	Keri Killebrew, First Team
1991	Carrie Couturier, First Team Keri Killebrew, First Team

Pacific-10 Conference All-Freshman Team

2013	Kyra Holt, First Team Emmy Allen, Honorable Mention Hailey Bethune, Honorable Mention
2009	Oceana Bush, First Team Rachel Todorovich, Honorable Mention
2006	Corina Beyer, Honorable Mention Kelly Hyder, Honorable Mention
2005	Brittany Johnson, Honorable Mention Jalen Pendon, Honorable Mention
2004	Jennifer Todd, Honorable Mention
2003	Kristen Carlson, First Team Jennifer Todd, First Team
2002	Brenn Larson, First Team
2000	Zanda Bautre, First Team
1999	LaToya Harris, First Team Holly Harris, Honorable Mention Melissa Wright, Honorable Mention
1997	Colleen Smith, Honorable Mention
1995	Jennifer Stinson, First Team

Jen Canevari, Honorable Mention

1993 Sarah Silvernail, First Team

1992 Maureen Cox, First Team

1988 Carrie Couturier, First Team

Pacific-10 Conference Player of the Year

1996 Sarah Silvernail

Pacific-10 Conference Coach of the Year

2009 Andrew Palileo

1995 Cindy Fredrick

Pacific-10 Conference Medal Winner

1998 Stephanie Papke

AVCA All-America Team

2011 Meagan Ganzer, Honorable Mention

1996 Sarah Silvernail, First team
Stephanie Papke, Second team

1995 Sarah Silvernail, Second team

1992 Keri Killebrew, Second team

AVCA All-District VIII/All-West Region

2011 Meagan Ganzer

1996 Sarah Silvernail
Stephanie Papke

1995 Sarah Silvernail

1994 Sarah Silvernail

1993 Becky Howlett

1992 Keri Killebrew

1991 Carrie Couturier

Keri Killebrew

Kelli Hankins

1988 Kathleen Reeve

AVCA Pacific North Region Freshman of the Year

2013 Kyra Holt

AVCA District VIII Coach of the Year

1995 Cindy Fredrick

U.S. National Team

1997 Colleen Smith

1996 Sarah Silvernail

Jennifer Stinson

U.S. Strength & Conditioning Coaches All-America

1996 Sarah Silvernail

U.S. Olympic Festival Participants

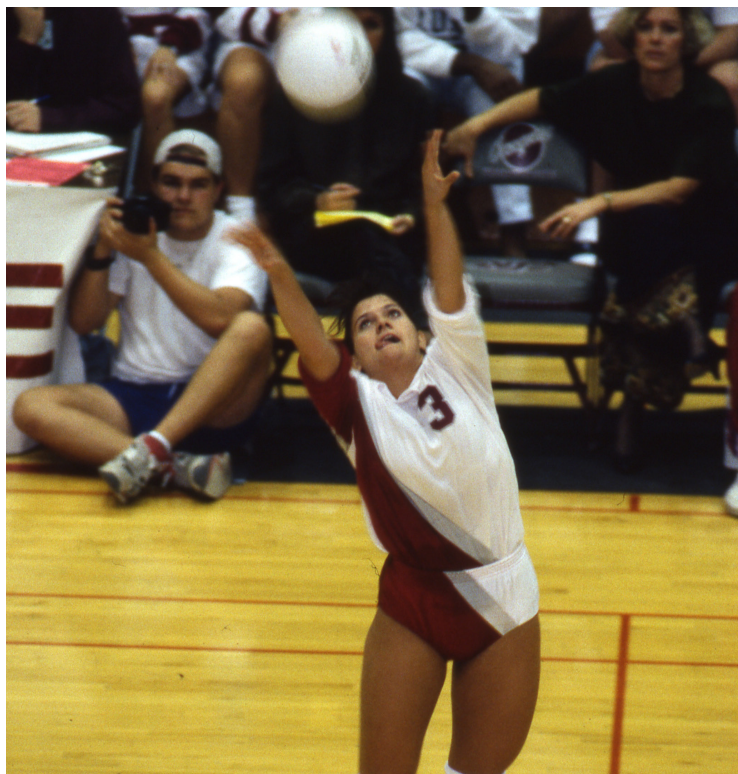
1994 Sarah Silvernail (North Team, Gold Medal)

1993 Becky Howlett (North Team)

Joanne Johnson (West Team, Silver Medal)

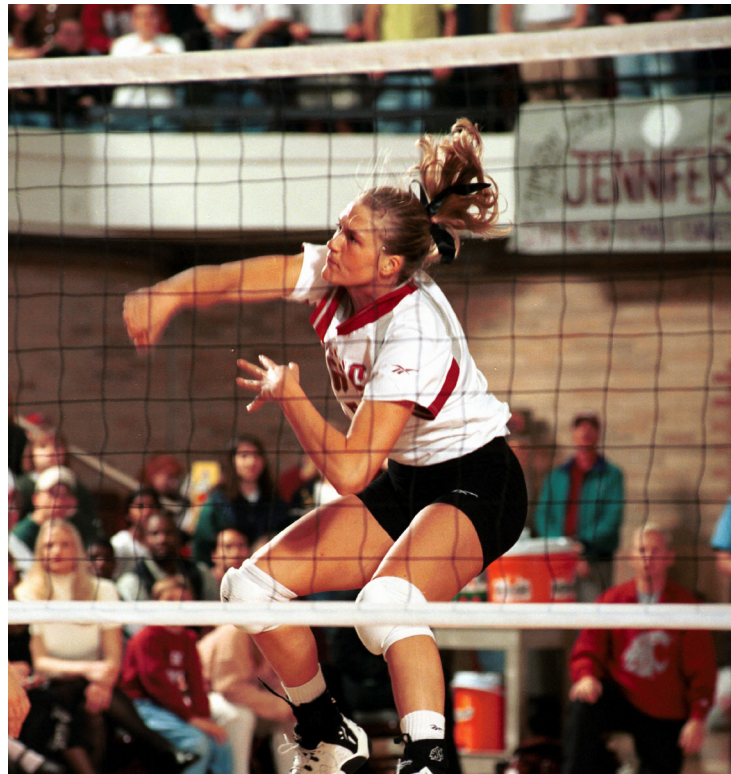
1989 Beth Welch (East Team, Bronze Medal)

Cougar All-Americans



Keri Killebrew

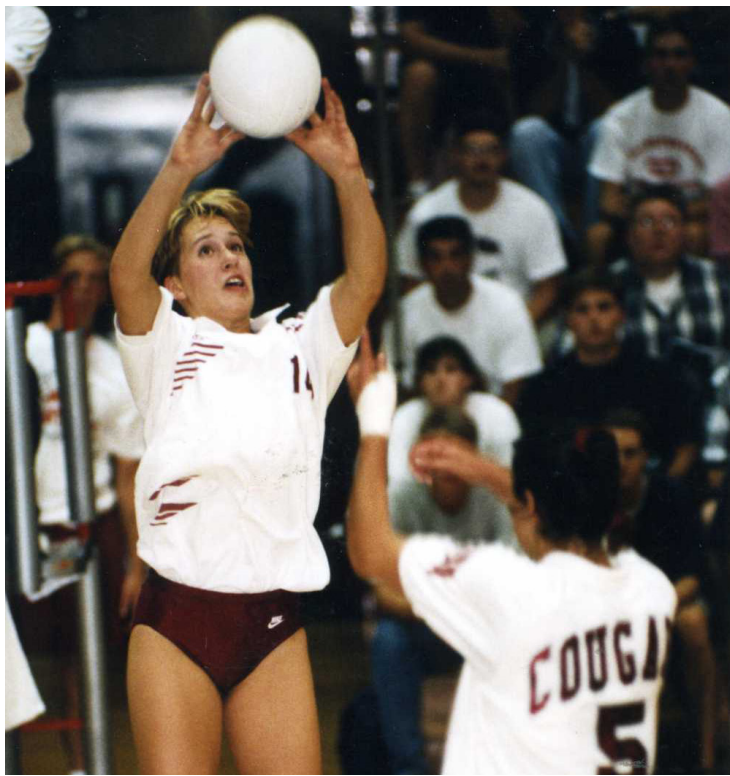
- 1992 All-America Second Team
- Captain of 1992 National Invitational Championship team
- 1992 NIVC Most Valuable Player Award
- 1991, 1992 First Team All-Pac-10
- WSU career assists record (4,553)
- 4th in Pac-10 career assists (4,553)
- 8th in NCAA all-time career assists (5,848)
- 21st player in Div. I history to reach 5,000 assists
- 1991, 1992 All-West Region teams
- WSU match assists record (85 vs. USC, 1992)



Sarah Silvernail

- 1996 All-America First Team
- 1995 All-America Second Team
- 1996 Pac-10 Player of the Year
- All-Pacific Region Tournament team
- Three-time All-District VIII Team
- Six-time Pac-10 Player of the Week
- AVCA National Player of the Week Nov. 3-10, 1996
- WSU career kills record (1848)
- WSU single-season kills record (649)
- WSU match kills record (39)
- Pac-10 single-season kills per game avg. (6.12 kpg)
- 1996 GSSA Amateur Female Athlete of the Year
- 1996 Tacoma News Tribune Female Athlete of the Year
- 1996 Seattle PI Star Award finalist

Cougar All-Americans



Stephanie Papke

- 1996 All-America Second Team
- 1996 First Team All-Pac-10
- 1996 All-District VIII Team
- 1996 Pac-10 All-Academic First Team
- 1996 Pac-10 assists avg. leader (13.92)
- 8th in Pac-10 hitting pct. (.313)
- 2nd Best Pac-10 single season assist avg. (13.92)
- 1997 All-Pac-10 Honorable Mention
- 1997 Pac-10 All Academic Honorable Mention
- 3rd in WSU career assists (3,839)
- 1998 Pac-10 Medal Winner
- 1998 NCAA Woman of Year Nominee



Meagan Ganzer

- 2011 All-America Honorable Mention
- 2011 AVCA All-Region Team
- 2011 All-Pac-12 First Team
- 10th Cougar to land 1,000 career kills
- 3rd in WSU career kills (1,531)
- 9th in WSU career solo blocks (52)
- Led Pac-12 with 4.88 kills per set
- 4.88 kills per set was 4th-best nationally
- 2nd in Pac-12 and 6th nationally with 5.38 points per set
- 2nd-best in WSU single season records for kills in 2011 (595), and 8th in 2010 (467)
- 2010 All-Pac-12 Honorable Mention



Academic Honors

Academic success has been a mainstay of the Cougar volleyball program. To be eligible for selection to the Pac-12 All-Academic team, a student-athlete must have a minimum 3.0 overall grade point average, be either a starter or a significant contributor, and be in their second year at their school.

Pac-10/12 All-Academic Teams

- | | |
|--|---|
| 1991 Carrie Couturier, first team | 2007 Brittany Johnson, first team |
| 1992 Corey Bergey, honorable mention | Tara West, first team |
| 1993 Stacy Hoffman, second team | Jackie Albright, honorable mention |
| 1995 Shannon Wyckoff, first team | Adetokunbo Faleti, honorable mention |
| Stephanie Papke, second team | Maureen Perez, honorable mention |
| 1996 Stephanie Papke, first team | Cassie Robbins, honorable mention |
| Jennifer Stinson, second team | Stephanie Weishaar, honorable mention |
| Wendy Rouse, second team | 2008 Brittany Johnson, first team |
| Shannon Wyckoff, honorable mention | Jackie Albright, honorable mention |
| 1997 Wendy Rouse, second team | Cassie Robbins, honorable mention |
| Jennifer Stinson, second team | Amy Small, honorable mention |
| Shannon Wyckoff, second team | Stephanie Weishaar, honorable mention |
| Stephanie Papke, honorable mention | 2009 Jackie Albright, second team |
| 1998 Jennifer Stinson, first team | Faith Hutcherson, honorable mention |
| Samantha Spink, first team | Cassie Robbins, honorable mention |
| Kim Kleven, second team | 2010 Faith Hutcherson, honorable mention |
| Wendy Rouse, second team | 2011 Rachel Todorovich, honorable mention |
| Lucie Vratnickova, honorable mention | 2012 Camryn Irwin, first team |
| 2000 Melissa Boyle, second team | Stephanie Logan, second team |
| Holly Harris, honorable mention | Chelsey Bettinson, honorable mention |
| Kortney Jamtaas, honorable mention | Shawna Lum, honorable mention |
| Trina Kightlinger, honorable mention | Rachel Todorovich, honorable mention |
| Chelsie Schafer, honorable mention | 2013 Camryn Irwin, first team |
| 2001 Zanda Bautre, honorable mention | Chelsey Bettinson, honorable mention |
| Melissa Boyle, honorable mention | Shawna Lum, honorable mention |
| Adrian Hankoff, honorable mention | 2014 Stephanie Logan, first team |
| Holly Harris, honorable mention | Emmy Allen, honorable mention |
| Kortney Jamtaas, honorable mention | Chelsey Bettinson, honorable mention |
| Chelsie Schafer, honorable mention | Shawna Lum, honorable mention |
| 2002 Adrian Hankoff, honorable mention | Haley MacDonald, honorable mention |
| Holly Harris, honorable mention | Tani Stephens, honorable mention |
| Kortney Jamtaas, honorable mention | |
| Chelsie Schafer, honorable mention | |
| 2003 Zanda Bautre, second team | |
| 2004 Megan Camp, first team | |
| Alison Billingsley, second team | |
| 2005 Gwen Davis, first team | |
| 2006 Brittany Johnson, first team | |
| Stephanie Weishaar, honorable mention | |

Academic All-America® Teams as selected by CoSIDA

The Academic All-America teams program was created in 1952 by the College Sports Information Directors of America (CoSIDA) to honor college athletes who excel in not just sports but also in academics. To be eligible for the Academic All-American honors, a student-athlete must have at least a 3.20 cumulative grade point average (on a 4.0 scale), must be a significant contributor to the team, and be in at least their second season at their current school. District VIII includes schools in the states of Alaska, Arizona, California, Hawai'i, Idaho, Nevada, Oregon, Utah, Washington, and British Columbia.

All-District VIII Academic Teams, as selected by CoSIDA

- 2009 Jackie Albright, first team
- 2008 Brittany Johnson, second team
- 2007 Tara West, first team
Brittany Johnson, second team
- 2006 Brittany Johnson, third team
- 2003 Zanda Bautre, third team
- 1998 Jennifer Stinson, first team
- 1997 Jennifer Stinson, second team
Shannon Wyckoff, second team
- 1996 Shannon Wyckoff, second team
- 1995 Shannon Wyckoff, first team



National Academic All-America Teams, as selected by CoSIDA

- 2007 Tara West, third team



Zanda Bautre



Jennifer Stinson



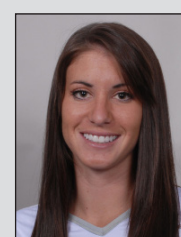
Shannon Wyckoff



Brittany Johnson



Tara West



Jackie Albright

Bohler Gym

The Best Volleyball-only Facility in the Pac-12

Home to Cougar Athletics since 1928.

One of the only facilities solely dedicated to volleyball in the nation.

Dominating home court advantage as fans are virtually on top of the action.

Cougars enjoy tremendous fan support from the University and the Pullman communities.



"Volleyball specific gyms are the future and Bohler Gym is a testament to the commitment Washington State University has made to Women's Volleyball and to the growth of our sport."

Volleyball Magazine, May 2003



The Cougars' home court is now called Marcia Sanholtz Court at Bohler Gym in honor of the 28-year administrative veteran of Cougar Athletics who retired Oct. 1, 2007. Sanholtz was the WSU Senior Associate Athletics Director/SWA and was a long-time proponent of gender equity and a champion for all sports at WSU as well as in the Pac-10 and the nation. She was the NACWAA president (1992-93), on the board of directors (1987-94), and named 1997 Administrator of the Year. She also received the NAGWS Pathfinder Award in 2001 and WSU Woman of Distinction in 2003. Sanholtz will be added to the Inland Empire Scroll of Honor in the fall of 2009.

Top WSU Volleyball Attendance in Bohler Gym

All-Time:

4,039	10/6/95	No. 4 Stanford	L 2-3
3,356	9/30/95	Idaho	W 3-0
3,267	10/15/94	Washington	L 0-3
3,226	11/22/96	No. 17 Washington	W 3-0
3,187	10/30/93	No. 6 Stanford	L 0-3
3,000	9/26/97	No. 7 USC	W 3-2
3,000	10/17/97	No. 4 Stanford	L 0-3
2,969	10/16/93	No. 1 UCLA	L 0-3
2,873	9/28/95	No. 17 Washington	W 3-1
2,724	10/23/09	No. 4 Washington	W 3-1
2,635	9/27/97	No. 18 UCLA	W 3-1
2,626	9/24/93	Washington	W 3-0
2,612	10/27/96	No. 3 Stanford	W 3-1
2,560	9/16/95	No. 4 UCLA	W 3-1
2,554	10/10/97	No. 24 Washington	L 1-3
2,511	11/6/92	Washington	L 2-3

Bohler Gym's seating capacity changed to 3,000 in 2000.

Recent (best home attendance for each season):

2000	1,711	11/17	No. 3 USC	L 1-3
2001	2,035	11/30	Hawai'i (NCAA)	L 0-3
2002	2,539	11/16	No. 1 Stanford	W 3-1
2003	1,789	10/17	No. 12 Washington	L 0-3
2004	1,011	11/15	No. 1 Washington	L 2-3
2005	1,633	11/4	No. 4 Stanford	L 1-3
2006	1,320	11/10	No. 4 Washington	L 0-3
2007	1,690	9/28	No. 6 Washington	L 0-3
2008	1,623	11/21	No. 5 Washington	L 1-3
2009	2,028	10/16	No. 16 USC	W 3-0
2010	1,203	11/5	No. 11 Washington	L 0-3
2011	1,111	11/11	No. 5 California	L 0-3
2012	1,289	11/23	No. 5 Washington	L 0-3
2013	1,854	9/25	No. 2 Washington	L 0-3
2014	1,507	11/28	No. 5 Washington	L 0-3



All-time Single Season Records

Kills

1. 649 Sarah Silvernail (.405), 1996
2. 595 Meagan Ganzer (.251), 2011
3. 524 Becky Howlett (.287), 1993
4. 483 Sarah Silvernail (.329), 1995
5. 479 Kyra Holt (.223), 2013
6. 474 Sarah Silvernail (.262), 1994
7. 473 Laurie Van Diest (.231), 1987
8. 471 Kelly Hankins (.262), 1991
9. 467 Meagan Ganzer (.217), 2010
10. 459 Kelly Hankins (.218), 1990

Kills per set (min. 75 sets)

1. 6.12 Sarah Silvernail (106 sets), 1996
2. 4.88 Meagan Ganzer (122 sets), 2011
3. 4.72 Meagan Ganzer (99 sets), 2010
4. 4.69 Sarah Silvernail (103 sets), 1995
5. 4.44 Becky Howlett (118 sets), 1993
6. 4.43 Sarah Silvernail (107 sets), 1994
7. 4.13 LaToya Harris (104 sets), 2000
8. 4.03 Kelly Hankins (114 sets), 1990
9. 4.01 Kathleen Reeve (93 sets), 1988
10. 3.91 Jaicee Harris (113 sets), 2012

Attack Attempts

1. 1457 Meagan Ganzer (595-229-1457), 2011
2. 1386 Jaicee Harris (442-213-1386), 2012
3. 1316 Kyra Holt (479-186-1316), 2013
4. 1285 Brittany Johnson (404-171-1285), 2006
5. 1268 Meagan Ganzer (467-192-1268), 2010
6. 1257 Becky Howlett (524-163-1257), 1993
7. 1256 Carla Reyes (438-207-1256), 1989
8. 1243 Sarah Silvernail (649-146-1243), 1996
9. 1228 Kelly Rosin (407-200-1228), 2004
10. 1195 Kyra Holt (392-197-1195), 2014

Attack pct. (min. 225 attempts)

1. .405 Sarah Silvernail (649-146-1243), 1996
2. .355 Carrie Gilley (407-107-846), 1992
3. .339 Carrie Gilley (199-59-413), 1991
4. .336 Ver'Leea Hardaway (267-76-568), 2013
5. .329 Carrie Couturier (448-128-973), 1991
- .329 Sarah Silvernail (483-151-1009), 1995
7. .322 Cassie Robbins (115-37-242), 2008
- .322 Brittany Tillman (272-95-550), 2009
9. .320 Keren Oigman (311-97-668), 1995
10. .318 Jennifer Stinson (228-72-490), 1998

Assists

1. 1726 Keri Killebrew (136 sets), 1992
2. 1611 Beth Welch (148 sets), 1988
3. 1588 Keri Killebrew (122 sets), 1991
4. 1476 Stephanie Papke (106 sets), 1996
5. 1443 Beth Welch (133 sets), 1987
6. 1431 Krista Beightol (119 sets), 1993
7. 1383 Brenn Larson (112 sets), 2002
8. 1357 Kali Surplus (104 sets), 2000
9. 1348 Haley MacDonald (122 sets), 2014
10. 1273 Rene Bordelon (111 sets), 2009

Assists per set (min. 75 sets)

1. 13.92 Stephanie Papke (106 sets), 1996
2. 13.05 Kali Surplus (104 sets), 2000
3. 13.02 Keri Killebrew (122 sets), 1991
4. 12.89 Melissa Wright (96 sets), 1999
5. 12.69 Keri Killebrew (136 sets), 1992
6. 12.67 Stephanie Papke (100 sets), 1995
7. 12.45 Kali Surplus (95 sets), 2001
8. 12.35 Brenn Larson (112 sets), 2002
9. 12.06 Samantha Spink (95 sets), 1998
10. 12.04 Stephanie Papke (90 sets), 1997

Service aces

1. 55 Carrie Couturier (119 sets), 1991
2. 53 Keri Killebrew (136 sets), 1992
3. 50 Cindy Baker (146 sets), 1988
4. 49 Beth Welch (148 sets), 1988
5. 45 Adrian Hankoff (108 sets), 2002
6. 44 Beth Welch (133 sets), 1987
- 44 LaToya Harris (104 sets), 2000
8. 43 Adrian Hankoff (89 sets), 2001
9. 42 Donna Finney (140 sets), 1988
10. 40 Beth Welch (137 sets), 1989
- 40 LaToya Harris (109 sets), 2002

Service aces per set (min. 75 sets)

1. 0.48 Adrian Hankoff (89 sets), 2001
2. 0.46 Carrie Couturier (119 sets), 1991
3. 0.42 LaToya Harris (104 sets), 2000
- 0.42 Adrian Hankoff (108 sets), 2002
5. 0.40 LaToya Harris (92 sets), 2001
6. 0.39 Keri Killebrew (136 sets), 1992
7. 0.38 Keren Oigman (103 sets), 1995
8. 0.37 LaToya Harris (109 sets), 2002
9. 0.34 Cindy Baker (146 sets), 1998
- 0.34 Victoria Prince (106 sets), 2002



All-time Single Season Records

Digs

1. 565 Kelly Hyder (106 sets), 2006
2. 531 Oceana Bush (111 sets), 2009
3. 524 Kelly Hyder (107 sets), 2007
4. 521 Kate Sommer (122 sets), 2014
5. 514 Jalen Pendon (113 sets), 2005
6. 495 Kate Sommer (123 sets), 2013
7. 469 Kortney Jamtaas (107 sets), 2002
8. 459 Kate Sommer (113 sets), 2012
9. 416 Beth Welch (148 sets), 1988
10. 413 Cindy Baker (146 sets), 1988

Digs per set (min. 75 sets)

1. 5.33 Kelly Hyder (106 sets), 2006
2. 4.90 Kelly Hyder (107 sets), 2007
3. 4.78 Oceana Bush (111 sets), 2009
4. 4.55 Jalen Pendon (113 sets), 2005
5. 4.38 Kortney Jamtaas (107 sets), 2002
6. 4.27 Kate Sommer (122, sets), 2014
7. 4.06 Kate Sommer (113 sets), 2012
8. 4.02 Kate Sommer (123 sets), 2013
9. 3.76 Oceana Bush (99 sets), 2010
10. 3.72 Shannon Wyckoff (101 sets), 1995

Block solos

1. 68 Carrie Couturier (142 sets), 1988
2. 49 Laurie Van Diest (131 sets), 1987
3. 44 Carrie Couturier (119 sets), 1991
4. 42 Carrie Couturier (112 sets), 1990
5. 41 Carrie Couturier (95 sets), 1989
6. 38 Chani Phillips (46 matches), 1981
7. 36 Sarah Silvernail (103 sets), 1995
8. 35 Joanne Johnson (118 sets), 1993
9. 31 Joanne Johnson (131 sets), 1992
- 31 Sarah Silvernail (107 sets), 1994

Block assists

1. 167 Joanne Johnson (131 sets), 1992
2. 163 Joanne Johnson (118 sets), 1993
3. 154 Chelsey Bettinson (122 sets), 2014
4. 153 Jennifer Stinson (114 sets), 1997
5. 138 Sarah Silvernail (106 sets), 1996
6. 130 Jen Barcus (107 sets), 2005
7. 125 Natalia Owens (110 sets), 2005
8. 124 Carrie Gilley (136 sets), 1992
9. 122 Jennifer Todd (113 sets), 2003
10. 121 Carrie Couturier (142 sets), 1988
- 121 Marcelina Glab (113 sets), 2012

Total blocks

1. 198 Joanne Johnson (131 sets), 1992
- 198 Joanne Johnson (118 sets), 1993
3. 189 Carrie Couturier (142 sets), 1988
4. 178 Jennifer Stinson (114 sets), 1997
5. 175 Chelsey Bettinson (122 sets), 2014
6. 164 Sarah Silvernail (106 sets), 1996
7. 159 Laurie Van Diest (131 sets), 1987
8. 153 Sarah Silvernail (103 sets), 1995
9. 151 Carrie Couturier (112 sets), 1990
10. 146 Jen Barcus (107 sets), 2005

Blocks per set (min. 75 sets)

1. 1.68 Joanne Johnson (118 sets), 1993
2. 1.56 Jennifer Stinson (114 sets), 1997
3. 1.55 Sarah Silvernail (106 sets), 1996
4. 1.51 Joanne Johnson (131 sets), 1992
5. 1.49 Sarah Silvernail (103 sets), 1995
6. 1.43 Chelsey Bettinson (122 sets), 2014
7. 1.39 Carrie Couturier (95 sets), 1989
8. 1.36 Jen Barcus (107 sets), 2005
9. 1.35 Carrie Couturier (112 sets), 1990
10. 1.33 Carrie Couturier (142 sets), 1988

Points (since 2001)

1. 656.5 Meagan Ganzer (595k 28a 12-43b), 2011
2. 557.5 Kyra Holt (479k 34a 6-77b), 2013
3. 526.0 Meagan Ganzer (467k 16a 19-48b), 2010
4. 493.0 Jaicee Harris (442k 27a 1-46b), 2012
5. 481.0 Jennifer Todd (381k 32a 14-108b), 2004
6. 474.5 Kelly Rosin (407k 26a 4-75b), 2004
7. 464.5 Adrian Hankoff (378k 45a 8-67b), 2002
8. 455.9 LaToya Harris (381k 40a 5-56b), 2002
9. 452.0 Brittany Johnson (404k 3a 14-62b), 2006
10. 442.0 Kyra Holt (392k 22a 4-48b), 2014

Points per set (min. 75 sets)

1. 5.38 Meagan Ganzer (122 sets), 2011
2. 5.31 Meagan Ganzer (99 sets), 2010
3. 4.62 Jennifer Todd (104 sets), 2004
4. 4.53 Kyra Holt (123 sets), 2013
5. 4.36 Jaicee Harris (113 sets), 2012
6. 4.31 LaToya Harris (92 sets), 2001
7. 4.30 Adrian Hankoff (108 sets), 2002
8. 4.22 Brittany Johnson (107 sets), 2006
9. 4.21 Kelly Rosin (96 sets), 2006
10. 4.20 Kelly Rosin (113 sets), 2004



All-time Career Records

Kills

1. 1848 Sarah Silvernail (.301), 1993-96
2. 1547 Carrie Couturier (.271), 1988-91
3. 1531 Meagan Ganzer (.226), 2008-11
4. 1459 LaToya Harris (.246), 1999-02
5. 1395 Kristen Hovde (.226), 1989-92
6. 1180 Jaicee Harris (.153), 2011-14
7. 1118 Brittany Johnson (.157), 2005-08
8. 1113 Kelly Rosin (.186), 2003-06
9. 1054 Keren Oigman (.273), 1994-97
10. 1051 Shannon Wyckoff (.210), 1994-97

Kills per set (min. 250 sets)

1. 4.46 Sarah Silvernail (414 sets), 1993-96
2. 3.84 Megan Ganzer (399 sets), 2008-11
3. 3.65 LaToya Harris (400 sets), 1999-02
4. 3.31 Carrie Couturier (468 sets), 1988-91
5. 3.08 Adrian Hankoff (316 sets), 1999-02
6. 2.97 Chelsie Schafer (286 sets), 1999-02
7. 2.91 Kristen Hovde (480 sets), 1989-92
8. 2.89 Jennifer Stinson (348 sets), 1995-98
9. 2.86 Carla Reyes (272 sets), 1987-89
10. 2.77 Brittney Johnson (403 sets), 2005-08

Attack Attempts

1. 4083 Sarah Silvernail (1848-620-4083), 1993-96
2. 3941 Meagan Ganzer (1531-640-3941), 2008-11
3. 3805 Brittany Johnson (1118-521-3805), 2005-08
4. 3760 Jaicee Harris (1180-606-3760), 2011-14
5. 3741 Kristen Hovde (1395-548-3741), 1989-92
6. 3712 LaToya Harris (1459-545-3712), 1999-02
7. 3674 Carrie Couturier (1547-553-3674), 1988-91
8. 3363 Kelly Rosin (1113-487-3363), 2003-06
9. 3296 Jackie Albright (958-460-3296), 2006-09
10. 2813 Carla Reyes (987-459-2813), 1986-89

Attack pct. (min. 2000 attempts)

1. .306 Carrie Gilley (972-303-2187), 1990-93
2. .301 Sarah Silvernail (1848-620-4083), 1993-96
3. .298 Becky Howlett (960-285-2263), 1992-93
4. .286 Jennifer Stinson (1006-354-2276), 1995-98
5. .273 Keren Oigman (1054-371-2504), 1994-97
6. .271 Carrie Couturier (1547-553-3674), 1988-91
7. .246 LaToya Harris (1459-545-3712), 1999-02
8. .242 Jen Barcus (763-258-2088), 2002-05
9. .240 Kelly Hankins (930-380-2294), 1990-91
10. .203 Elis Arias (749-279-2041) 1994-97

Assists

1. 4553 Keri Killebrew (372 sets), 1990-92
2. 4218 Beth Welch (418 sets), 1987-89
3. 3839 Stephanie Papke (303 sets), 1994-97
4. 3390 Camryn Irwin (348 sets), 2011-13
5. 2717 Krista Beightol (449 sets), 1990, 1992-94
6. 2540 Kali Surplus (199 sets), 2000-01
7. 2093 Renee Bordelon (195 sets), 2008-09
8. 2072 Brenn Larson (181 sets), 2002-03
9. 1980 Maureen Perez (223 sets), 2005-07
10. 1572 Haley MacDonald (168 sets), 2013-2014

Assists per set (min. 1000 assists)

1. 12.89 Melissa Wright (96 sets), 1999
2. 12.76 Kali Surplus (199 sets), 2000-01
3. 12.67 Stephanie Papke (303 sets), 1994-97
4. 12.24 Keri Killebrew (372 sets), 1990-92
5. 11.87 Corina Beyer (99 sets), 2006
6. 11.45 Brenn Larson (181 sets), 2002-03
7. 11.20 Samantha Spink (134 sets), 1997-98
8. 10.78 Nicole Martin (107 sets), 2004
9. 10.73 Renee Bordelon (195 sets), 2008-09
10. 10.09 Beth Welch (418 sets), 1987-89

Service Aces

1. 143 LaToya Harris (400 sets), 1999-02
2. 133 Beth Welch (418 sets), 1987-89
3. 128 Carrie Couturier (468 sets), 1988-91
4. 126 Keri Killebrew (372 sets), 1990-92
5. 123 Cindy Baker (475 sets), 1985-88
6. 115 Keren Oigman (425 sets), 1994-97
7. 98 Adrian Hankoff (316 sets), 1999-02
8. 89 Lisa Davis (not available), 1981-84
9. 87 Sarah Silvernail (414 sets), 1993-96
10. 82 Laurie VanDiest (381 sets), 1984-87
82 Shannon Wyckoff (387 sets), 1994-97

Digs

1. 1773 Kelly Hyder (417 sets), 2006-09
2. 1475 Kate Sommer (358 sets), 2012-2014
3. 1254 Shannon Wyckoff (387 sets), 1994-97
4. 1232 Kortney Jamtaas (401 sets), 1999-02
5. 1215 Jaicee Harris (473 sets), 2011-2014
6. 1178 LaToya Harris (400 sets), 1999-02
7. 1111 Beth Welch (418 sets), 1987-89
8. 1107 Cindy Baker (475 sets), 1985-88
9. 1070 Keren Oigman (425 sets), 1994-97
10. 998 Jackie Albright (387 sets), 2006-09



All-time Career Records

Digs per set (min. 900 digs)

1. 4.30 Oceana Bush (210 sets), 2009-10
2. 4.25 Kelly Hyder (417 sets), 2006-09
3. 4.12 Kate Sommer (122 sets), 2012-14
4. 3.96 Jalen Pendon (173 sets), 2005-06
5. 3.35 Stacey Holbrook (119 sets), 2003-04
6. 3.24 Shannon Wyckoff (387 sets), 1994-97
7. 3.07 Kortney Jamtaas (401 sets), 1999-02
8. 2.97 Joy Sperry (174 sets), 1998-99
9. 2.94 LaToya Harris (400 sets), 1999-02
10. 2.91 Cindy Baker (278 sets), 1987-88

Block Solos

1. 195 Carrie Couturier (468 sets), 1988-91
2. 125 Laurie VanDiest (131+ sets), 1984-87
3. 98 Sarah Silvernail (414 sets), 1993-96
4. 73 Brittany Johnson (403 sets), 2005-08
5. 69 Joanne Johnson (281 sets), 1991-93
6. 59 Jennifer Stinson (348 sets), 1995-98
7. 53 Holly Harris (397 sets), 1999-02
8. 52 Carrie Gilley (402 sets), 1990-93
- 52 Meagan Ganzer (399 sets), 2008-11
10. 49 Cassie Robbins (365 sets), 2006-09
- 49 Brittany Tillman (385 sets), 2007-10

Block Assists

1. 420 Carrie Couturier (468 sets), 1988-91
2. 394 Sarah Silvernail (414 sets), 1993-96
3. 368 Marcelina Glab (436 sets), 2010-13
4. 360 Jennifer Stinson (348 sets), 1995-98
5. 343 Joanne Johnson (281 sets), 1991-93
6. 336 Jen Barcus (335 sets), 2002-05
7. 333 Holly Harris (397 sets), 1999-02
8. 329 Keren Oigman (425 sets), 1994-97
9. 315 Laurie VanDiest (131+ sets), 1984-87
10. 313 Ver'Leea Hardaway (410 sets), 2014

Total Blocks

1. 615 Carrie Couturier (468 sets), 1988-91
2. 492 Sarah Silvernail (414 sets), 1993-96
3. 440 Laurie VanDiest (131+ sets), 1984-87
4. 419 Jennifer Stinson (348 sets), 1995-98
5. 412 Joanne Johnson (281 sets), 1991-93
6. 408 Marcelina Glab (436 sets), 2010-13
7. 386 Holly Harris (397 sets), 1999-02
8. 379 Jen Barcus (335 sets), 2002-05
9. 364 Carrie Gilley (402 sets), 1990-93
10. 363 Keren Oigman (425 sets), 1994-97

Blocks per set (min. 300 sets)

1. 1.31 Carrie Couturier (468 sets), 1988-91
2. 1.20 Jennifer Stinson (348 sets), 1995-98
3. 1.19 Sarah Silvernail (414 sets), 1993-96
4. 1.13 Jen Barcus (335 sets), 2002-05
5. 0.97 Holly Harris (397 sets), 1999-02
6. 0.95 Cassie Robbins (365 sets), 2006-09
7. 0.94 Marcelina Glab (436 sets), 2010-13
8. 0.91 Carrie Gilley (402 sets), 1990-93
9. 0.87 Ver'Leea Hardaway (410 sets), 2011-2014
10. 0.85 Keren Oigman (425 sets), 1994-97

Points (since 2001)

1. 1707.5 Meagan Ganzer (1531k 48a 52-153b), 2008-11
2. 1358.0 Kelly Rosin (1113k 74a 27-288b), 2003-06
3. 1342.5 Jaicee Harris (1080k 67a 141-63b), 2011-2014
4. 1327.0 Brittany Johnson (1118k 24a 73-224b), 2005-08
5. 1118.5 Rachel Todorovich (960k 25a 25-217b), 2009-12
6. 1084.0 Jackie Albright (958k 48a 26-104b), 2006-09
7. 1026.0 Jen Barcus (763k 52a 43-336b), 2002-05
8. 999.5 Kyra Holt (871k 56a 10-125b), 2013-2014
9. 967.0 Brittany Tillman (786k 1a 49-262b), 2007-10
10. 961.0 Marcelina Glab (693k 44a 40-368b), 2010-13

Sets played

1. 480 Kristen Hovde, 1989-92
2. 473 Jaicee Harris, 2011-2014
3. 468 Carrie Couturier, 1988-91
4. 455 Shawna Lum, 2011-2014
5. 449 Krista Beightol, 1990, 92-94
6. 436 Marcelina Glab, 2010-13
7. 425 Keren Oigman, 1994-97
8. 418 Beth Welch, 1987-89
9. 417 Kelly Hyder, 2006-09
10. 414 Sarah Silvernail, 1993-96

Matches played

1. 139 Kristen Hovde, 1989-92
2. 130 Carrie Couturier, 1988-91
3. 129 Jaicee Harris, 2011-2014
- 129 Krista Beightol, 1990, 92-94
5. 126 Shawna Lum, 2011-2014
6. 125 Carrie Gilley, 1990-93
7. 124 Marcelina Glab, 2010-13
- 124 Keren Oigman, 1994-97
9. 123 Kelly Hyder, 2006-09
10. 121 Ver'Leea Hardaway, 2011-14



Individual Match Records

Kills

- 39 Sarah Silvernail, at California 9/28/1996
- 35 Sarah Silvernail, vs USC 11/9/1996
- 32 Susan Guest, vs Northern Iowa 9/11/1987
- 31 Meagan Ganzer, at Portland 9/2/2011
- 31 Meagan Ganzer, at Colorado 11/18/2011

Attack Attempts

- 79 Kyra Holt, at California 11/24/2013
- 75 Jaicee Harris, at Idaho 8/25/2012
- 75 Jaicee Harris, vs Oregon State 11/16/2012
- 74 LaToya Harris, at Arizona State 10/20/2000
- 74 Meagan Ganzer, at Oregon State 10/22/2011

Attack Percentage [20 Attempts]

- .800 Elis Arias, vs Tulsa 8/30/1996
- .800 Shannon Wyckoff, vs So. Illinois 8/31/1996
- .786 Elis Arias, at Iowa State 9/7/1996
- .769 Stephanie Papke, vs South Florida 11/30/1996
- .750 Carrie Couturier, at Boise State 9/2/1988

Assists

- 85 Keri Killebrew, vs. USC 10/24/1992
- 83 Kali Surplus, vs Oregon State 10/13/2000
- 82 Keri Killebrew, at Arizona 10/18/1991
- 82 Melissa Wright, vs USC 9/30/1999
- 80 Melissa Wright, vs Washington 10/16/1999

Service Aces

- 7 Cindy Baker, vs Idaho State 9/2/1988
- 6 Adrian Hankoff, at Alaska Fairbanks 9/7/2002
- 5 - 18 tied with 5

Digs

- 39 Oceana Bush, vs Arizona State 10/3/2009
- 36 Kate Sommer, at California 11/24/2013
- 35 Jalen Pendon, at Arizona State 10/27/2005
- 34 Kortney Jamtaas, vs Stanford 11/16/2002
- 34 Jalen Pendon, vs Arizona State 10/1/2005
- 34 Kelly Hyder, vs Arizona State 11/16/2006

Solo blocks

- 8 Carrie Couturier, at Oregon State; 10/4/1991
- 6 Carrie Couturier, vs Gonzaga 9/6/1988
- 5 Carrie Couturier, vs Washington 10/21/1988
- 5 Carrie Couturier, at Gonzaga 10/26/1988
- 4 - 6 tied with 4

Assist blocks

- 12 Jennifer Stinson, at Oregon 9/20/1997
- 12 Holly Harris, vs Arizona State 9/23/2000
- 11 - 6 tied with 11

Total blocks

- 13 Holly Harris, vs Arizona State 9/23/2000
- 12 Laurie Van Diest, at Oregon State 10/31/1987
- 12 Jennifer Stinson, at Oregon 9/20/1997
- 12 Natalia Owens, at UC Davis 9/3/2005
- 12 Marcelina Glab, vs CSU Bakersfield 9/14/2012
- 12 Chelsey Bettinson, at UCLA 11/2/2014

Points

- 35.5 Meagan Ganzer, vs Gonzaga 9/14/2010
- 33.5 Meagan Ganzer, at Colorado 11/18/2011
- 33.0 LaToya Harris, vs Stanford 11/16/2002
- 33.0 Meagan Ganzer, at San Francisco 9/4/2010
- 33.0 Meagan Ganzer, at Portland 9/2/2011

Kills (3 sets)

- 30 Meagan Ganzer, vs E. Washington 9/9/2010
- 26 Sarah Silvernail, vs Stanford 12/14/1996
- 24 Sarah Silvernail, at USC 10/11/1996
- 24 Sarah Silvernail, at UCLA 10/12/1996
- 24 Sarah Silvernail, at Arizona 11/16/1996
- 24 Sarah Silvernail, vs Kansas State 12/8/1996

Kills (4 sets)

- 35 Sarah Silvernail, at USC 11/9/1996
- 30 Meagan Ganzer, at San Francisco 9/4/2010
- 30 Meagan Ganzer, vs Gonzaga 9/14/2010
- 29 Sarah Silvernail, vs Loyola Marymount 12/13/1996
- 29 Latoya Harris, vs Stanford 11/16/2002
- 29 Meagan Ganzer, at Arizona State 11/20/2010

Kills (5 sets)

- 39 Sarah Silvernail, at California 9/28/1996
- 32 Guest, Susan, vs Northern Iowa 9/11/1987
- 31 Meagan Ganzer, at Portland 9/2/2011
- 31 Meagan Ganzer, at Colorado 11/18/2011
- 30 Kristin Hovde, at Oregon State 10/4/1991
- 30 Meagan Ganzer, at Arizona State 9/23/2011

Attack Attempts (3 sets)

- 59 Jaicee Harris, vs California 10/19/2012
- 56 Jaicee Harris, vs Pacific 8/25/2012
- 53 Meagan Ganzer, vs Eastern Washington 9/9/2010
- 52 Reeve, Kathleen, vs Arizona State 11/7/1987
- 52 Sarah Silvernail, at Arizona 11/16/1996
- 52 Sarah Silvernail, vs Stanford 12/14/1996

Attack Attempts (4 sets)

- 75 Jaicee Harris, vs Oregon State 11/16/2012
- 68 Meagan Ganzer, vs Oregon 10/1/2011
- 65 Sarah Silvernail, vs USC 11/9/1996
- 65 Meagan Ganzer, vs Santa Barbara 9/4/2010
- 65 Meagan Ganzer, at San Francisco 9/4/2010
- 65 Kyra Holt, at Utah 11/13/2014



Individual Match Records

Attack Attempts (5 sets)

- 79 Kyra Holt, at California 11/24/2013
- 75 Jaicee Harris, at Idaho 8/25/2012
- 74 LaToya Harris, at Arizona State 10/20/2000
- 74 Meagan Ganzer, at Oregon State 10/22/2011
- 74 Kyra Holt, vs Arizona 11/22/2014

Aces (3 sets)

- 6 Adrian Hankoff, at Alaska Fairbanks 9/7/2002
- 5 - 11 with 5

Aces (4 sets)

- 7 Cindy Baker, vs Idaho State 9/2/1988
- 5 Wendy Rouse, at Arizona State 10/4/1997
- 5 LaToya Harris, at Oregon State 11/11/2001
- 5 LaToya Harris, at California 10/19/2001
- 5 Bree Flach, at California 10/31/2008
- 5 Camryn Irwin, vs Santa Clara 8/26/2011

Aces (5 sets)

- 5 Donna Finney, vs Washington 10/21/1988
- 5 Kristen Carlson, vs San Francisco 8/30/2003
- 4 10 tied with 4

Assists (3 sets)

- 63 Stephanie Papke, at USC 10/11/1996
- 60 Keri Killebrew, vs Idaho 9/21/1991
- 59 Melissa Wright, at Washington 11/12/1999
- 58 Kali Surplus, at Washington 9/29/2000
- 57 Keri Killebrew, vs Washington 9/18/1991
- 57 Stephanie Papke, at Arizona 11/16/1996

Assists (4 sets)

- 83 Kali Surplus, vs Oregon State 10/13/2000
- 82 Keri Killebrew, at Arizona 10/18/1991
- 72 Stephanie Papke, vs USC 11/9/1996
- 68 Melissa Wright, vs San Jose State 9/4/1999
- 67 Beth Welch, vs USC 11/11/1988

Assists (5 sets)

- 82 Melissa Wright, vs USC 9/30/1999
- 80 Melissa Wright, vs Washington 10/16/1999
- 78 Stephanie Papke, at California 11/3/1995
- 76 Keri Killebrew, at Gonzaga 9/24/1991
- 75 Beth Welch, vs UCLA 10/16/1987

Digs (3 sets)

- 29 Joy Sperry, vs Creighton 9/3/1999
- 26 Jalen Pendon, at USC 11/12/2005
- 25 Kelly Hyder, vs Oregon 10/7/2006
- 24 Carrie Couturier, vs Arizona 11/16/1991
- 24 Kortney Jamtaas vs California 11/15/2002
- 24 Kelly Hyder, at UT Arlington 9/9/2006
- 24 Kate Sommer, at Arizona State 11/6/2013

Digs (4 sets)

- 35 Jalen Pendon, at Arizona State 10/27/2005
- 34 Jamtaas, Kortney, vs Stanford 11/16/2002
- 34 Jalen Pendon, vs Arizona State 10/1/2005
- 30 Jamtaas, Kortney, at Washington 10/11/2002
- 29 Kelly Hyder, vs UNLV 9/1/2006
- 29 Kelly Hyder, at USC 9/28/2006
- 29 Kate Sommer, vs Oregon State 11/16/2012

Digs (5 sets)

- 39 Oceana Bush, vs Arizona State 10/3/2009
- 36 Kate Sommer, at California 11/24/2013
- 34 Kelly Hyder, vs Arizona State 11/16/2006
- 32 Kelly Hyder, at Oregon State 9/21/2007
- 32 Kate Sommer, at Arizona State 10/19/2014

Total Blocks (3 sets)

- 11 Melissa Boyle, vs California 9/21/2001
- 10 Jennifer Todd, vs Arizona State 9/19/2003
- 10 Te'Ara Epps, at Oregon 10/22/2005
- 10 Tara West, at Washington 10/26/2007
- 10 Ver'Leea Hardaway, at Sam Houston St. 9/14/2013

Total Blocks (4 sets)

- 12 Laurie Van Diest, at Oregon State 10/31/1987
- 12 Jennifer Stinson, at Oregon 9/20/1997
- 12 Marcelina Glab, vs CSU Bakersfield 9/14/2012
- 10 - 9 tied with 10

Total Blocks (5 Sets)

- 13 Holly Harris, vs Arizona State 9/23/2000
- 12 Natalia Owens, at UC Davis 9/3/2005
- 12 Chelsey Bettinson, at UCLA 11/20/2014
- 11 - 8 tied with 11

Points (3 Sets)

- 31.5 Meagan Ganzer, vs E. Washington 9/9/2010
- 24.0 Meagan Ganzer, vs Colorado 10/8/2011
- 23.0 Kyra Holt, vs Utah 11/2/2013
- 22.0 Brittany Johnson, at Nevada 9/8/2007
- 21.5 Adrian Hankoff, vs Idaho 10/30/2001
- 21.5 Meagan Ganzer, vs Nevada 9/2/2011

Points (4 sets)

- 35.5 Meagan Ganzer, vs Gonzaga 9/14/2010
- 33.0 LaToya Harris, vs Stanford 11/16/2002
- 33.0 Meagan Ganzer, at San Francisco 9/4/2010
- 32.0 Meagan Ganzer, at Arizona State 11/20/2010
- 29.5 Meagan Ganzer, vs Oregon 10/1/2011

Points (5 Sets)

- 33.5 Meagan Ganzer, at Colorado 11/18/2011
- 33.0 Meagan Ganzer, at Portland 9/2/2011
- 31.0 Meagan Ganzer, vs Washington 11/25/2011
- 30.5 - 3 tied with 30.5



Team Match Records

Kills

- 100 at Arizona 10/18/1991
- 98 vs Washington 10/16/1999
98 vs Oregon State 10/13/2000
- 94 vs USC 9/30/1999
- 93 at Arizona State 10/20/2000
93 vs South Carolina 9/23/1988

Attack Attempts

- 280 at Arizona State 10/20/2000
- 255 vs South Carolina 9/23/1988
- 254 vs USC 9/30/1999
- 252 vs Washington 10/16/1999
- 248 vs Arizona State 9/23/2000

Attack Percentage

- .516 vs Alabama State 8/31/2012
- .478 vs Utah 9/5/2009
- .474 vs Rice 8/31/1993
.474 vs Seattle U 8/31/2012
- .463 vs E. Washington 9/6/2013

Assists

- 94 at Arizona 10/18/1991
94 vs Oregon State 10/13/2000
- 93 vs Washington 10/16/1999
- 88 vs USC 9/30/1999
- 84 at Arizona State 10/20/2000

Service Aces

- 15 vs Idaho State 9/2/1988
15 vs Washington 10/21/1988
- 14 at Gonzaga 10/26/1988
- 13 vs Oklahoma 8/29/2003
13 at Utah 9/15/1987
13 at Illinois State 9/24/1988

Digs

- 127 vs UCLA 10/16/1987
127 vs Portland 10/25/1987
- 117 vs California 10/29/1988
117 vs USC 11/11/1988
117 vs Arizona State 11/16/2006

Solo Blocks

- 12 at Oregon State 10/4/1991
- 11 vs Washington 10/21/1988
11 at Gonzaga 10/26/1988
- 10 at Oregon State 10/31/1987
10 vs Santa Clara 9/12/1991
10 at Gonzaga 8/29/2007

Assist Blocks

- 42 vs Arizona State 9/23/2000
- 36 at UC Davis 9/3/2005
36 vs Oregon 11/17/2005
36 at UCLA 11/2/2014
- 34 vs Wichita State 8/30/2003
34 vs USC 11/27/2004
34 vs California 11/3/2005

Total Blocks

- 24.0 at Oregon State 10/31/1987
24.0 vs Santa Clara 9/12/1991
24.0 vs Oregon 11/17/2005
- 23.0 at Gonzaga 10/26/1988
23.0 vs Arizona State 9/23/2000

Kills (3 Sets)

- 77 vs Washington 9/18/1991
77 at Washington 11/12/1999
- 74 at USC 10/11/1996
- 69 at Washington 9/29/2000
- 68 at Washington 9/20/1996

Kills (4 Sets)

- 100 at Arizona 10/18/1991
- 98 vs Oregon State 10/13/2000
- 90 vs Washington 10/27/2000
- 85 vs USC 11/9/1996
- 84 vs USC 11/11/1988

Kills (5 Sets)

- 98 vs Washington 10/16/1999
- 94 vs USC 9/30/1999
- 93 vs. South Carolina 9/23/1988
93 at Arizona State 10/20/2000
- 91 at California 11/3/1995
91 vs Arizona State 9/23/2000

Attack Attempts (3 Sets)

- 180 at Arizona 11/16/1996
- 179 vs Washington 9/18/1991
- 170 at USC 10/11/1996
- 166 vs Idaho State 9/12/1987
- 165 vs Stanford 10/17/1997

Attack Attempts (4 Sets)

- 229 vs USC 11/17/2000
- 228 at Stanford 10/6/2000
- 226 at Oregon State 9/28/2001
- 225 vs Oregon State 10/13/2000
- 223 vs USC 11/11/1988

Kills (5 Sets)

- 280 at Arizona State 10/20/2000
- 255 vs South Carolina 9/23/1988
- 254 vs USC 9/30/1999
- 252 vs Washington 10/16/1999
- 248 vs Arizona State 9/23/2000

Aces (3 Sets)

- 12 vs Oregon State 11/20/1997
12 vs Boise State 8/31/2001
12 at Oregon 9/29/2001
12 vs Gonzaga 9/14/2004
- 11 - 5 tied with 11

Aces (4 Sets)

- 15 vs Idaho State 9/2/1988
- 13 vs Oklahoma 8/29/2003
- 12 vs Portland 9/3/1988
12 vs New Mexico St. 9/8/1988
12 at Oregon State 11/11/2000

Aces (5 Sets)

- 15 vs Washington 10/21/1988
- 14 at Gonzaga 10/26/1988
- 13 at Utah 9/15/1987
13 vs Illinois State 9/24/1988
- 11 at USC 11/13/1987

Assists (3 Sets)

- 72 at Washington 11/12/1999
- 67 at Washington 9/29/2000
- 66 at USC 10/11/1996
- 65 vs Washington 9/18/1991
- 63 vs. Idaho 9/21/1991

Assists (4 Sets)

- 94 at Oregon 10/18/1991
94 vs Oregon State 10/13/2000
- 81 vs USC 11/9/1996
- 79 vs USC 11/11/1988
- 77 at Stanford 10/6/2000
77 vs Washington 10/27/2000

Assists (5 Sets)

- 93 vs Washington 10/16/1999
- 88 vs USC 9/30/1999
- 84 at Arizona State 10/20/2000
- 83 vs UCLA 10/16/1987
83 at Gonzaga 9/24/1991



Team Match Records

Digs (3 Sets)

1. 90 vs Arizona 11/16/1991
2. 84 vs Santa Clara 9/8/1988
3. 82 at USC 11/12/2005
4. 80 vs E. Washington 10/15/1991
5. 79 at UT Arlington 9/9/2006

Digs (4 Sets)

1. 127 vs Portland 11/16/1991
2. 117 vs USC 11/11/1988
3. 107 vs Arizona State 10/1/2005
4. 106 at Oregon State 9/28/2001
5. 105 at Gonzaga 10/20/1987

Digs (5 Sets)

1. 127 vs UCLA 10/16/1987
2. 117 vs California 10/29/1988
- 117 vs Arizona State 11/16/2006
4. 116 at UC Davis 9/3/2005
5. 108 vs. USC 11/17/2013

Total Blocks (3 Sets)

1. 20.0 vs Toledo 9/3/2005
2. 19.0 vs Mid. Tenn. St. 9/16/2005
3. 17.5 at Idaho 9/17/1996
4. 17.0 vs California 11/2/2000
5. 16.0 vs Arizona State 9/19/2003

Total Blocks (4 Sets)

1. 24.0 at Oregon State 10/31/1987
2. 19.5 vs Oral Roberts 9/9/2005
- 19.5 vs LMU 9/19/2014
4. 19.0 vs LMU 9/13/2003
- 19.0 vs Arizona 10/4/2007

Total Blocks (5 Sets)

1. 24.0 vs Santa Clara 9/12/1991
- 24.0 vs Oregon 11/17/2005
3. 23.0 at Gonzaga 10/26/1988
- 23.0 vs Arizona State 9/23/2000
5. 22.0 at UC Davis 9/3/2005

Team Season Records

Kills - 2,235 (.264), 1992

Kills per set - 17.83 (106 sets), 1996

Attack Attempts - 6,063 (2206k-927e-6063ta), 1988

Attack percentage - .283 (1890k-645e-4396ta), 1996

Assists - 1,890 (137 sets), 1992

Assists per set - 15.90 (106 sets), 1996

Service Aces - 283 (148 sets), 1988

Service aces per set - 1.91 (148 sets), 1988

Digs - 2,695 (148 sets), 1988

Digs per set - 18.21 (148 sets), 1988

Block solos - 156 (148 sets), 1988

Block assists - 605 (137 sets), 1992

Total blocks - 396.5 (137 sets), 1992

Blocks per set - 3.50 (113 sets), 2005

Points (since 2001)

- 2,232.5 (1789k 175a 38-461b), 2002

Points per set - 20.73 (95 sets), 2001

Sets played - 148, 1988

Matches played - 39, 1988



All-time Cougar Coaches

YEAR	RECORD	COACH	CONFERENCE
2014	10-22	Jen Greeny	1-19 / 12th Pac-12
2013	18-15	Jen Greeny	5-15 / 11th Pac-12
2012	13-19	Jen Greeny	3-17 / 12th Pac-12
2011	12-20	Jen Greeny	4-18 / 11th Pac-12
2010	6-22	Andrew Palileo	0-18 / 10th Pacific-10
2009	18-13	Andrew Palileo	6-12 / 8th Pacific-10 \$
2008	10-19	Andrew Palileo	3-15 / t-9th Pacific-10
2007	10-22	Brian Heffernan	1-17 / 10th Pacific-10
2006	15-17	Brian Heffernan	3-15 / 9th Pacific-10
2005	10-21	Brian Heffernan	2-16 / 9th Pacific-10
2004	5-26	Brian Heffernan	2-16 / 9th Pacific-10
2003	9-20	Cindy Fredrick	5-13 / t-7th Pacific-10
2002	24-8	Cindy Fredrick	11-7 / t-3rd Pacific-10 \$\$\$
2001	17-12	Cindy Fredrick	9-9 / 6th Pacific-10 \$
2000	19-10	Cindy Fredrick	9-9 / t-5th Pacific-10 \$\$
1999	13-15	Cindy Fredrick	7-11 / t-6th Pacific-10
1998	12-14	Cindy Fredrick	8-10 / t-5th Pacific-10
1997	26-7	Cindy Fredrick	12-6 / t-4th Pacific-10 \$\$\$
1996	27-6	Cindy Fredrick	14-4 / 2nd Pacific-10 \$\$\$
1995	22-7	Cindy Fredrick	12-6 / t-2nd Pacific-10 \$\$
1994	16-13	Cindy Fredrick	8-10 / 7th Pacific-10 \$
1993	21-11	Cindy Fredrick	8-10 / 6th Pacific-10 \$\$
1992	27-10	Cindy Fredrick	10-8 / 5th Pacific-10 +
1991	23-12	Cindy Fredrick	10-8 / 4th Pacific-10 \$
1990	13-18	Cindy Fredrick	6-12 / 7th Pacific-10
1989	9-29	Cindy Fredrick	2-16 / 10th Pacific-10
1988	22-17	Karen Lamb	5-13 / 8th Pacific-10
1987	16-21	Karen Lamb	2-16 / 9th Pacific-10
1986	13-22	Karen Lamb	3-15 / t-8th Pacific-10
1985	9-23	Kaprice Bray	0-12 / 7th NorPac
1984	8-25-2	Jim Coleman	1-10 / 9th NorPac
1983	2-24	Jim Coleman	0-9 / 10th NorPac
1982	2-19	Jim Coleman	0-12 / 10th NorPac
1981	21-26	Cindy Laughlin	7th NWVL
1980	15-31	Cindy Laughlin	7th NWVL
1979	18-25*	Kay Wilke	6th NCWSA
1978	35-18	Marie Matsen	6th NCWSA
1977	36-9	Marie Matsen	1st NCWSA #
1976	31-10	Judy Novinc	3rd NCWSA
1975	24-12	Sue Durrant	5th NCWSA
1974	29-11	Sue Durrant	4th NCWSA
1973	14-12	Sue Durrant	9th NCWSA

+ = National Invitational Volleyball Champions

\$ = NCAA First Round \$\$ = NCAA Second Round \$\$\$ = NCAA Regionals

= 1977 regional champions, 1-4 record at AIAW National Championships

NorPac = Northern Pacific Athletic Conference NWVL = Northwest Women's Volleyball League

NCWSA = Northwest College Women's Sports Association * WSU forfeited two wins in 1979

All-time Records Versus Opponents

	WSU	OPP		WSU	OPP			
Air Force Academy	1	1	Kansas State	4	1	Seattle University	3	0
Alabama	1	1	Lamar	1	0	Seton Hall	1	0
Alabama-Birmingham	1	0	Lehigh	1	0	South Alberta Tech	1	0
Alabama State	1	0	Lewis-Clark State	7	4		WSU	OPP
Alaska-Fairbanks	3	0	Linfield	0	1	South Carolina	1	1
Alberta, Univ. of	2	0	Long Beach State	0	3	Sout Dakota	1	0
Arkansas	1	0	Louisiana-Lafayette	1	0	South Dakota State	1	1
Army	1	0	Louisville	0	1	South Florida	2	0
Ball State	0	1	Loyola-Marymount	3	2	Southern Illinois	1	0
Baylor	1	0	Manhattan	1	0	Southern Oregon	3	0
Belmont	1	0	Medicine Hat College	1	0	SE Missouri State	1	0
Boise State	11	3	Memphis State	1	0	Southwest Missouri	0	1
Bowling Green	1	0	Metro State	0	1	Southwest Texas State	3	0
Bradley	1	0	Miami	1	0	Syracuse	0	1
Brigham Young	2	5	Michigan State	1	0	Temple	1	0
Buffalo	1	0	Mid. Tennessee State	0	1	Tennessee	2	0
Butler	2	0	Mississippi	0	1	Texas A & M	1	4
BYU-Hawaii	2	2	Missouri	1	1	Texas-Arlington	2	0
Cal Poly	2	2	Montana	16	15	Texas-Austin	0	1
Cal State Fullerton	2	3	Montana State	14	10	Texas Tech	1	0
Cal State Northridge	3	1	Mount Royal College	1	0	Toledo	1	0
Calgary	0	7	Nebraska	0	1	Tulsa	2	1
Carroll College	4	0	Nevada	9	3	UC Davis	2	3
Central Michigan	1	0	New Mexico	2	3	UC Irvine	1	1
Central Washington	2	2	New Mexico State	2	1	UC Riverside	2	2
Chapman	0	1	New Orleans	1	0	UC Santa Barbara	0	2
Chaminade	1	0	North Dakota State	1	0	UNLV	1	5
Chico State	1	0	Northern Arizona	0	1	U.S. International	1	0
Cincinnati	0	1	Northern Colorado	1	1	Utah State	4	2
Clemson	1	0	Northern Illinois	2	0	Utah Valley	2	1
Colorado State	2	1	Northern Iowa	2	4	Victoria	1	0
Colorado College	1	0	Northern Montana	1	0	Villanova	1	0
Cornell	1	0	Northwestern	1	0	Virginia	1	0
Creighton	1	0	Northwest Nazarene	1	0	Virginia Tech	2	0
CSU Bakersfield	2	0	Notre Dame	4	2	Weber State	9	2
Dayton	1	0	Oakland	1	0	Western Michigan	1	0
Denver	0	2	Occidental	2	0	Western Oregon	6	1
Duquesne	1	0	Ohio	0	1	Western Washington	10	0
Eastern Illinois	1	0	Ohio State	0	1	Whitman	2	0
Eastern Oregon	4	0	Oklahoma	2	0	Whitworth	11	2
Eastern Washington	30	11	Oral Roberts	1	1	Wichita State	1	2
Florida	0	3	Pacific	0	4	William & Mary	1	0
Fresno Pacific	0	1	Pacific Lutheran	3	0	Wisconsin-Milwaukee	1	0
Fresno State	1	5	Penn State	0	2	Wright-State	1	0
George Washington	0	1	Pepperdine	0	2	Wyoming	3	2
Georgetown	1	0	Pittsburgh	1	0			
Gonzaga	34	10	Portland	8	1			
Hawaii	0	4	Portland State	5	18			
Hawaii-Hilo	0	1	Providence	1	0			
Hawaii-Pacific	1	0	Radford	1	0			
Hofstra	1	0	Rice	2	0			
Houston	1	1	Rhode Island	4	0			
Humbolt State	1	1	Sacramento State	1	2			
Idaho	41	21	Saint Louis	1	1			
Idaho State	8	4	Sam Houston State	2	0			
Illinois	0	1	San Diego	1	1			
Illinois State	2	0	San Francisco	3	5			
Indiana	1	0	San Francisco State	0	1			
Ind. Purdue Ft. Wayne	1	0	San Jose State	1	7			
Ind. Pur. Indianapolis	1	0	Santa Clara	7	5			
Iowa	2	0	Simon Fraser	0	1			
Iowa State	3	0	Sonoma State	1	0			
Jackson State	1	0	Saskatchewan	0	1			

VERSUS PAC-12 TEAMS

	WSU	OPP
Arizona	15	43
Arizona State	25	33
California	23	40
Colorado	3	7
Oregon	35	45
Oregon State	46	40
Southern California	13	46
Stanford	3	55
UCLA	7	51
Utah	12	7
Washington	22	63

All-time Results

1976 (33-4-1)

Coach: Judy Novine

3-0 + # North Idaho College
 2-1 # Whitworth
 2-0 # Idaho
 2-3 + @Spokane Falls CC
 2-1 % Washington
 2-0 % Western Washington
 2-0 % Pacific Lutheran
 0-2 % Central Washington
 2-0 % Eastern Washington
 3-0 Whitworth
 3-0 @Idaho
 3-1 @Eastern Washington
 3-0 Western Washington
 3-2 Oregon
 3-0 Oregon College of Educ.
 3-0 Southern Oregon
 3-1 * Montana State
 3-0 * Montana
 1-3 * Idaho
 3-0 * Eastern Washington
 2-0 * Montana State
 2-0 * Eastern Oregon
 2-0 & Eastern Washington
 2-0 & Whitworth
 2-1 & Idaho
 1-2 & Central Washington
 3-0 ^ Portland State
 3-0 ^ Portland State
 3-0 ^ Pacific Lutheran
 3-1 ^ Oregon State
 3-0 ^ Washington
 3-0 Idaho
 1-1 \$ Oregon
 1-2 \$ Washington
 2-0 \$ Eastern Washington
 2-0 \$ Idaho
 2-0 \$ Southern Oregon
 3-0 \$ Eastern Oregon
 0-2 \$ Portland State
 2-0 \$ Oregon State
 2-0 \$ Washington

EWSTune-Up, Cheney
 + Community College Exhibition
 % Washington All-State Tournament, Ellensburg
 * MSU Invite, Bozeman
 & NCWSA Eastern Area Tournament, Pullman
 ^ Seattle
 \$ NCWSA NW Reg. IX, Monmouth

1977 (31-8)

Coach: Marie Matsen

2-0 # Idaho
 2-0 # Boise State
 2-0 # Montana State
 2-0 # Gonzaga
 2-0 + # Treasure Valley CC
 3-0 Idaho
 3-1 % Oregon State
 3-0 % Montana
 3-2 % Eastern Oregon
 3-0 + * Flathead Valley CC
 3-0 * Montana
 3-0 * Boise State
 3-0 * Montana State
 3-0 @Eastern Washington
 0-3 Portland State
 3-0 & Montana
 3-2 & Washington
 3-0 & Montana State
 3-0 & Oregon College of Educ.

3-0 Whitworth
 3-0 Eastern Washington
 2-0 ^ Montana State
 2-0 ^ Whitworth
 2-0 ^ Northwest Nazarene
 2-0 + ^ Spokane Falls CC
 2-1 ^ Central Washington
 3-0 @Idaho
 3-1 > Western Washington
 2-3 > Oregon
 3-1 > Pacific Lutheran
 3-2 + @Spokane Falls CC
 3-1 @Eastern Oregon
 1-3 Oregon Col. of Educ. (N)
 1-2 \$ Oregon State
 2-1 \$ Washington
 2-1 \$ Oregon College of Educ.
 2-0 \$ Oregon
 2-0 \$ Portland State
 2-0 \$\$ Rhode Island
 0-2 \$\$ Hawaii
 0-2 \$\$ Alabama
 0-2 \$\$ Southwestern Missouri
 0-2 \$\$ Ball State

Moscow
 + Community College Exhibition
 % Portland
 * Montana Invite, Missoula
 & Match Play, Pullman
 ^ NCWSA Eastern Area, Ellensburg
 > Eugene
 \$ NCWSA NW Reg. IX, Cheney
 \$\$ AIAW Championships, Provo

1978 (35-18-1)

Coach: Marie Matsen

2-0 + # Spokane Falls CC
 2-1 # Whitworth
 2-1 # Idaho
 2-0 # Gonzaga
 2-0 # Boise State
 2-0 + ^ Edmonds CC
 2-0 + ^ Mt. Hood CC
 2-0 ^ Lewis-Clark State
 2-1 ^ Eastern Washington
 2-1 ^ Whitworth
 3-0 ^ Eastern Washington
 3-2 ^ Whitworth
 3-0 + Spokane Falls CC
 3-0 Idaho
 2-0 % Western Washington
 2-0 % Victoria
 0-2 % Oregon
 2-0 % Oregon State
 0-2 % Nevada-Reno
 1-2 % Washington
 0-2 % Simon Fraser
 2-0 > Montana
 2-0 > Montana State
 1-2 > Portland State
 1-2 > Washington
 2-1 > Oregon
 2-1 > Oregon State
 2-0 > Western Washington
 3-0 Eastern Washington
 2-0 * Occidental
 2-1 * Oregon College of Educ.
 2-1 * Oregon State
 2-0 * Southern Oregon
 2-1 * Occidental
 0-3 * Portland State
 3-1 @Idaho
 0-2 < San Jose State
 0-2 < Arizona
 0-2 < Pepperdine

1-1 < Western Ontario
 0-2 < USC
 2-0 & Oregon
 2-0 & Western Washington
 1-2 & Portland State
 2-1 & Washington
 2-0 & Montana State
 1-2 & Oregon State
 2-0 & Montana
 2-3 ~ Montana State
 2-3 ~ Saskatchewan
 3-2 ~ Alberta
 3-2 ~ Sacramento State
 3-1 ~ Alberta
 2-0 \$ Western Washington
 1-2 \$ Oregon
 1-2 \$ Washington
 2-0 \$ Montana
 1-2 \$ Montana State

Moscow
 ^ Spokane
 % Portland State Invite
 > Bozeman
 * SOSC Invite, Ashland
 < NIVT, Los Angeles
 & UW Invite, Seattle
 ~ MSU Invite, Bozeman
 \$ NCWSA Reg. IX, Pullman

1979 (18-25-5**)

Coach: Kay Wilke

2-1 # Idaho State
 2-0 # Gonzaga
 2-0 # Idaho
 2-0 ^ Central Washington
 2-0 ^ Western Washington
 1-2 ^ Whitworth
 2-0 + ^ Spokane Falls CC
 2-0 * Carroll College
 1-2 + * Montana State JV
 2-1 * Montana
 2-0 + * Flathead JC
 2-0 * Carroll College
 2-0 + * Montana JV
 3-0 Whitworth
 0-2 % Montana State
 1-1 % Whitworth
 1-1 % Oregon
 2-0 % Western Washington
 0-2 % Portland State
 1-1 % British Columbia
 3-1 ~ Montana
 3-1 ~ Oregon State
 0-3 ~ Portland State
 3-2 ~ Montana State
 2-3 ~ Oregon
 1-3 ~ Washington
 0-2 & Linfield
 0-2 & Oregon State
 2-0 & Oregon Col. of Educ.
 2-0 & Alaska-Fairbanks
 0-2 & Nevada-Reno
 2-0 & Portland State
 1-2 & Oregon
 3-2 + Spokane Falls CC**
 3-0 @Idaho**
 0-2 < Cal State-Fullerton
 0-2 < Pepperdine
 1-1 < California
 0-2 < San Diego
 1-1 < Brigham Young
 1-3 @Montana
 3-1 ! Oregon State
 0-3 ! Washington
 0-3 ! Oregon

0-3 ! Portland State
 2-3 ! Montana
 3-1 Eastern Washington**
 1-3 Montana
 0-3 Montana State
 1-3 \$ Portland State
 0-3 \$ Montana

** - Wins were forfeited
 + Exhibition matches
 # Idaho Invite, Moscow
 ^ Whitworth Invite, Spokane
 * Montana Invite, Missoula
 % Portland State Invite, Portland
 ~ NCWSA Div. I, Seattle
 & SOSC Invite, Ashland
 < UCLA Invite, Los Angeles
 ! Missoula
 \$ NCWSA Reg. IX, Portland

1980 (13-31-2)

Coach: Cindy Laughlin

2-0 # Gonzaga
 0-2 # Weber State
 1-1 # Whitman
 1-1 # Idaho
 0-2 ^ Texas A & M
 0-2 ^ Utah State
 0-2 ^ BYU-Hawaii
 0-2 ^ Wyoming
 1-3 ^ New Mexico
 1-3 ^ Northern Arizona
 3-1 * Northern Montana
 3-1 * Carroll College
 3-0 + * Lethbridge CC
 3-0 * Medicine Hat College
 2-3 @Lewis-Clark State
 2-1 % Western Washington
 2-0 + % Ft. Steilacoom CC
 0-2 % Montana
 2-1 % Alaska-Fairbanks
 0-2 % Portland State
 2-0 % Oregon State
 0-3 Montana
 0-3 Montana State
 0-3 ~ Oregon
 2-3 ~ Oregon State
 0-3 ~ Portland State
 0-3 ~ Washington
 1-3 ¢ Calgary
 0-3 ¢ Calgary
 1-3 ¢ Calgary
 1-3 ¢ Calgary
 3-0 + ¢ Lethbridge CC
 3-0 ¢ South Alberta Tech
 3-0 ¢ Mt. Royal College
 0-3 Idaho
 2-3 + @Spokane Falls CC
 3-0 @Gonzaga
 2-1 > Nevada-Reno
 0-2 > Oregon State
 1-2 > Santa Clara
 0-2 > Oregon
 0-3 & Oregon
 0-3 & Portland State
 0-3 & Washington
 2-3 & Oregon State
 3-1 Lewis-Clark State
 3-2 @Montana
 0-3 @Montana State
 0-3 \$ Portland State
 0-3 \$ Oregon State

IdahoTune-up, Moscow
 ^ BYU Invite, Provo
 * Carroll College Invite, Helena

% Portland State Invite
 ~ NWVL Seeding, Pullman
 ¢ Calgary Invite, Canada
 > Oregon Invite, Eugene
 & NWVL Seeding, Eugene
 \$ NCWSA Reg. IX, Missoula

1981 (18-26)

Coach: Cindy Laughlin

2-0 # Humboldt State
 0-2 # Cal Poly-SLO
 2-0 # Weber State
 2-0 # U.S. International
 2-0 # Sonoma State
 0-2 # UC-Davis
 1-3 @UC-Riverside
 1-3 @UC-Irvine
 3-1 ^ Idaho
 2-0 ^ Carroll College
 2-0 + ^ Spokane Falls CC
 2-0 ^ Whitman
 2-0 + ^ Spokane Falls CC
 2-1 ^ Montana
 0-3 @Montana State
 0-3 @Montana
 0-3 & Calgary
 1-3 & Utah
 2-3 & Weber State
 3-0 @Lewis-Clark State
 0-3 Portland State
 2-3 Oregon State
 1-3 Idaho
 0-3 Washington
 0-3 Oregon
 3-2 @Washington
 0-3 @Portland State
 1-3 @Oregon State
 1-3 @Oregon
 3-2 Whitman
 1-3 Montana State
 0-3 Montana
 3-2 @Eastern Washington
 2-0 * Colorado
 2-1 * Idaho State
 2-1 * Weber State
 1-2 * Air Force Academy
 2-1 * Colorado College
 1-2 * Metro State
 0-2 * Northern Colorado
 3-1 @Idaho
 0-3 Calgary
 2-0 + ¢ Columbia Basin CC
 2-0 ¢ Whitworth
 0-3 ¢ Calgary
 0-3 \$ Portland State
 0-3 \$ Montana

Western States Invite, Davis, Calif.
 ^ IdahoTune-Up, Mocow
 & Montana Invite, Missoula
 * Northern Colorado Invite, Greeley
 ¢ WSU Invite, Pullman
 \$ AIAW Reg. IX, Portland

1982 (2-21-2 / 0-12, 10th NorPac)

Coach: Jim Coleman

1-1 # Hayward State
 1-1 # Cal-Northridge
 0-2 # Santa Clara
 0-2 # San Francisco State
 0-2 @Humboldt St
 0-3 @UC-Davis
 0-3 @Sacramento State

3-1 ^ Lewis-Clark State
 3-2 +^ Spokane Falls CC
 3-0 ^ Whitworth
 0-3 ^ Idaho
 2-3 ^ Idaho
 0-3 @California
 0-3 @San Jose State
 0-3 @Washington
 0-3 @Oregon State
 1-3 @Oregon
 2-3 Fresno State
 0-3 Pacific
 0-3 Washington
 1-3 Lewis-Clark State
 0-3 Oregon
 0-3 Oregon State
 1-3 Idaho
 2-3 San Francisco
 0-3 Santa Clara

Western States Invite, Davis, Calif.
 ^ Idaho Invite, Moscow

1983 (2-24 / 0-9, 10th NorPac)

Coach: Jim Coleman

2-3 @Nevada-Reno
 0-3 @Boise State
 1-3 Gonzaga
 2-1 # Lewis-Clark State
 2-0 # Idaho
 2-1 +# Spokane Falls CC
 0-2 # Whitworth
 0-2 # Gonzaga
 0-2 # Eastern Washington
 0-2 # Eastern Washington
 0-3 * @Oregon
 1-3 * @Oregon State
 1-3 Montana State
 2-3 * @San Francisco
 0-3 * @Santa Clara
 1-3 * @Washington
 0-3 * California
 1-3 * San Jose State
 1-3 Eastern Washington
 0-3 * Oregon
 0-3 * Oregon State
 2-3 Lewis-Clark State
 0-3 * @Pacific
 0-3 * @Fresno State
 0-3 @Gonzaga
 0-3 + Ito-Yokada
 0-3 Idaho
 1-3 * Washington

Idaho Invite, Moscow
 * NorPac Conference Match
 + Exhibition matches

1984 (8-25-2 / 8-25-2, 9th NorPac)

Coach: Jim Coleman

3-1 # Idaho State
 3-0 # Boise State
 2-3 # Oregon State
 0-3 # Nevada-Las Vegas
 2-3 @Eastern Washington
 0-2 ^ UC-Riverside
 1-1 ^ Cal State-Bakersfield
 0-2 ^ Portland State
 1-1 ^ Whitworth
 0-2 ^ San Francisco
 2-0 ^ Chico State
 3-0 Gonzaga
 0-2 @Portland State
 0-2 @Nevada-Las Vegas
 2-1 @Idaho State
 0-2 @Brigham Young

0-2 @Montana
 2-0 @Weber State
 0-3 * Oregon
 1-3 * Oregon State
 0-3 * @Santa Clara
 0-3 * @San Jose State
 0-3 * San Francisco
 3-2 * California
 3-0 Eastern Washington
 2-3 * @Washington
 0-3 @Idaho
 2-3 @Lewis-Clark State
 0-3 * Fresno State
 0-3 * Washington
 1-3 Montana State
 2-3 Montana
 0-3 Idaho
 0-3 * @Oregon
 0-3 * @Oregon State

Boise State Invite
 ^ Western States Invite, Davis, Calif.
 @ BYU Invite, Provo
 * NorPac Conference Match

1985 (9-23 / 0-12, 7th NorPac)

Coach: Kaprice Bray

3-0 # Gonzaga
 1-3 # Idaho
 1-3 # Cal State-Fullerton
 1-3 # Eastern Washington
 2-3 Gonzaga
 3-0 @Lewis-Clark State
 2-3 ^ Ohio State
 0-3 ^ Brigham Young
 1-3 ^ Montana
 3-0 ^ Nevada-Reno
 1-3 ^ Chapman
 1-3 ^ Idaho State
 3-0 ^ Utah State
 3-0 Eastern Washington
 2-3 @Idaho
 1-3 * Oregon State
 0-3 * Oregon
 2-3 * Washington
 3-0 @Gonzaga
 0-3 * San Jose State
 0-3 * California
 3-2 Idaho
 2-3 @Fresno Pacific
 0-3 * @Fresno State
 3-0 Lewis-Clark State
 0-3 * @Oregon
 1-3 * @Oregon State
 3-0 * @Eastern Washington
 0-3 * @Washington
 0-3 * @California
 0-3 * @San Jose State
 0-3 * @Fresno State

Idaho Invite, Moscow
 ^ BYU Invite, Provo
 * NorPac Conference Match
 @ at Seattle

1986 (13-22 / 3-15, T8th Pac-10)

Coach: Karen Lamb

0-2 @Boise State
 2-0 @Idaho
 0-2 @Washington
 0-3 @Washington
 3-1 @Idaho
 0-3 Montana
 3-0 * USC
 0-3 * UCLA
 3-2 # Weber State

1-3 # BYU-Hawaii
 3-1 # Utah
 0-3 # Washington
 3-2 # BYU-Hawaii
 1-3 @Gonzaga
 0-3 * @California
 1-3 * @Stanford
 0-3 * Oregon
 3-1 * Oregon State
 3-0 Eastern Washington
 3-2 Idaho
 1-3 * @Washington
 0-3 * @Arizona
 0-3 * @Arizona State
 3-0 Idaho
 0-3 * @UCLA
 3-1 * @USC
 3-1 @Eastern Washington
 3-0 Gonzaga
 0-3 * California
 0-3 * Stanford
 0-3 * @Oregon State
 0-3 * @Oregon
 1-3 * Washington
 1-3 * Arizona State
 2-3 * Arizona

& - Sun Valley Tournament
 # - BYU Pepsi Invitational
 * - Pac-10 Conference Match

1987 (16-21 / 2-16, 9th Pac-10)

Coach: Karen Lamb

3-0 Idaho
 3-1 Gonzaga
 1-3 @Idaho State
 2-3 & Northern Iowa
 3-0 & Michigan State
 3-0 & Idaho State
 1-3 & Northern Iowa
 3-2 @Utah
 3-2 # Weber State
 3-0 # Memphis State
 3-0 # Montana
 0-3 # Idaho State
 2-3 # Eastern Washington
 3-0 # UC-Riverside
 2-3 * Washington
 0-3 * @Stanford
 0-3 * @California
 3-0 * Oregon State
 0-3 * Oregon
 0-3 * @Arizona
 0-3 * @Arizona State
 3-1 @Eastern Washington
 2-3 * UCLA
 0-3 * USC
 3-1 @Gonzaga
 1-3 * California
 0-3 * Stanford
 3-1 Portland
 0-3 * @Oregon
 3-1 * @Oregon State
 1-3 * Arizona
 0-3 * Arizona State
 3-0 @Idaho
 2-3 * @USC
 0-3 * @UCLA
 3-0 Eastern Washington
 2-3 * @Washington

& - Colorado Tournament
 # - BYU Invite
 * - Pac-10 Conference match

1988 (22-17 / 5-13, 8th Pac-10)

Coach: Karen Lamb

3-2 Idaho
 3-1 & Idaho State
 3-0 & Boise State
 3-1 & Portland
 1-3 & Boise State
 3-1 Gonzaga
 3-0 ^ Santa Clara
 1-3 ^ New Mexico State
 0-3 ^ Nebraska
 3-0 ^ Boise State
 3-2 ^ Idaho State
 3-1 ^ Santa Clara
 1-3 * Arizona State
 1-3 * Arizona
 0-3 * @Washington
 2-3 # South Carolina
 3-2 # Illinois State
 3-2 # Tennessee
 3-0 # Illinois State
 2-3 * @California
 0-3 * @Stanford
 3-0 Eastern Washington
 3-0 * Oregon
 3-0 * Oregon State
 3-0 Portland
 1-3 * @UCLA
 1-3 * @USC
 3-0 Idaho
 2-3 * Washington
 3-2 @Gonzaga
 0-3 * Stanford
 2-3 * California
 3-0 * @Oregon State
 3-0 * @Oregon
 3-1 @Eastern Washington
 3-1 * USC
 0-3 * UCLA
 1-3 * @Arizona
 0-3 * @Arizona State

& - Boise State Classic
 ^ - Titan Mizuno Preview, Fullerton
 # - Illinois State Invitational
 * - Pac-10 Conference match

1989 (9-29 / 2-16, 10th Pac-10)

Coach: Cindy Fredrick

3-1 @Hawaii-Pacific
 3-1 @Chaminade
 0-3 @Hawaii
 3-1 @BYU-Hawaii
 0-3 @Hawaii
 2-3 @Hilo
 3-0 # Eastern Illinois
 3-0 # Utah
 2-3 # Cal-State Fullerton
 0-3 # California
 0-3 # Arizona State
 0-3 * Stanford
 0-3 * California
 0-3 @Idaho
 3-2 * @Oregon State
 0-3 * @Oregon
 1-3 @Gonzaga
 0-3 * USC
 0-3 * UCLA
 1-3 @Eastern Washington
 2-3 * @Arizona
 0-3 * @Arizona State
 2-3 @Brigham Young
 3-0 Idaho
 1-3 * Washington
 1-3 * Oregon
 0-3 * Oregon State
 0-3 * @UCLA

0-3 * @USC
 3-2 * Arizona State
 1-3 * Arizona
 1-3 @Eastern Washington
 0-3 * @Washington
 1-3 Gonzaga
 1-3 * @California
 0-3 * @Stanford
 3-0 ^ @Texas A & M
 0-3 ^ @Houston

- JMN Premiere Tournament, Fullerton, Calif.
 * - Pac-10 Conference match
 ^ - Houston Tournament

1990 (13-18 / 6-12, 7th Pac-10)

Coach: Cindy Fredrick

2-3 # Mississippi
 2-3 # Montana
 3-0 # Notre Dame
 2-3 Gonzaga
 3-0 ^ Montana State
 3-1 ^ Utah
 3-1 ^ Santa Clara
 0-3 ^ Montana
 0-3 * @USC
 0-3 * @UCLA
 3-0 Eastern Washington
 3-1 * Arizona
 3-1 * Arizona State
 3-0 @Idaho
 1-3 * @Washington
 0-3 * @Stanford
 0-3 * @California
 3-0 @Eastern Washington
 0-3 * Oregon State
 3-0 * Oregon
 0-3 * @Arizona State
 1-3 * @Arizona
 0-3 Idaho
 3-2 * Washington
 3-1 * California
 0-3 * Stanford
 2-3 * @Oregon
 3-1 * @Oregon State
 2-3 @Gonzaga
 1-3 * UCLA
 0-3 * USC

- Cougar Invitational, Pullman
 ^ - Utah Tournament, Salt Lake City
 * - Pac-10 Conference match

1991 (23-12 / 10-8, 4th Pac-10)

Coach: Cindy Fredrick

3-0 # Central Michigan
 3-0 # Loyola Marymount
 3-0 # Rice
 3-0 # Indiana
 3-0 & New Mexico State
 3-1 & Utah
 3-1 & Oregon State
 3-0 & Utah
 3-0 % SWTexas State
 3-2 % Santa Clara
 0-3 % UC Santa Barbara
 0-3 % Long Beach State
 1-3 % Oregon State
 3-0 * Washington
 3-0 Idaho
 3-2 @Gonzaga
 0-3 * Stanford
 3-1 * California
 3-2 * @Oregon State
 3-0 * @Oregon

1-3 * USC
0-3 * UCLA
3-0 Eastern Washington
3-1 * @Arizona
3-1 * @Arizona State
2-3 * @California
0-3 * @Stanford
3-0 * Oregon
3-0 * Oregon State
0-3 * @UCLA
0-3 * @USC
3-0 * Arizona State
3-0 * Arizona
1-3 * @Washington
1-3 \$ @New Mexico

- Cougar Invitational
& - Lady Ute Classic, Salt Lake City
% - JMN Premiere Tournament, Fullerton
* - Pac-10 Conference Match
\$ - NCAA Championships, First Round, Albuquerque

1992 (27-10 / 10-8, 5th Pac-10)

Coach: Cindy Fredrick

3-0 # Wisconsin-Milwaukee
3-0 # Utah State
3-1 # Portland
3-2 # Boise State
1-3 @George Washington
3-0 & Georgetown
3-0 & Rhode Island
3-1 & Virginia
3-1 * Oregon State
3-1 * Oregon
3-1 * Gonzaga
1-3 * @USC
0-3 * @UCLA
3-0 Eastern Washington
3-1 * Arizona
2-3 * Arizona State
3-0 * @Washington
1-3 * @Stanford
3-2 * @California
0-3 * UCLA
3-2 * USC
2-3 * @Arizona State
3-0 * @Arizona
2-3 * Washington
3-2 @Idaho
3-1 * California
0-3 * Stanford
3-0 * @Oregon
3-1 * @Oregon State
3-2 @Southwest Texas
0-3 @Texas
3-0 \$ Alabama-Birmingham
3-0 \$ Montana
3-0 \$ Cornell
3-0 \$ Iowa State
3-0 \$ Northern Illinois
3-0 \$ Bowling Green

- Cougar Challenge
& - Georgetown Invitational
* - Pac-10 Conference Match
\$ - Natl. Invitational Volleyball Championship, Kansas City

1993 (21-11 / 8-10, 6th Pac-10)

Coach: Cindy Fredrick

3-0 # Iowa State
3-0 # Idaho
3-2 # Wyoming
3-0 & Wright State
3-0 & Kansas State

3-0 & Iowa
0-3 * @Arizona
3-0 * @Arizona State
3-0 Gonzaga
3-0 * Washington
1-3 * Stanford
3-0 * California
1-3 * @Oregon State
3-0 * @Oregon
3-2 @Eastern Washington
3-1 * USC
0-3 * UCLA
2-3 *+ Washington
3-1 + Pittsburgh
3-2 * @California
0-3 * @Stanford
3-1 * Oregon
3-2 * Oregon State
0-3 * @UCLA
0-3 * @USC
2-3 * Arizona
2-3 * Arizona State
3-1 ^ Cal Poly SLO
3-1 ^ Baylor
3-1 ^ Nevada
3-1 \$ San Diego
0-3 \$\$ BYU

- Cougar Challenge, Pullman
& - Iowa Hawkeye Challenge, Iowa City
+ - Eddie Bauer First Serve Invitational, Seattle
^ - Nevada Turkey Day Tournament, Reno
* - Pac-10 Conference Match
\$ - NCAA Championships, First Round, Pullman
\$\$ - NCAA Championships, Second Round, Provo

1994 (16-13 / 8-10, 7th Pac-10)

Coach: Cindy Fredrick

3-1 Oklahoma
3-0 # Temple
3-0 # Gonzaga
3-2 # Nevada
1-3 # Northern Iowa
3-0 & Virginia Tech
3-0 & New Orleans
3-2 & Colorado State
0-3 * @Stanford
3-2 * @California
3-1 * Oregon State
3-1 * Oregon
1-3 @Idaho
0-3 * @USC
1-3 * @UCLA
3-0 * Arizona
2-3 * Arizona State
3-0 Eastern Washington
0-3 * Washington
3-1 * @Oregon
3-2 * @Oregon State
1-3 * UCLA
3-0 * USC
0-3 * @Arizona State
1-3 * @Arizona
2-3 * @Washington
3-0 * California
0-3 * Stanford
2-3 \$ New Mexico

- Cougar Challenge, Pullman
& - Colorado State Invitational, Fort Collins
* - Pac-10 Conference Match
\$ - NCAA Championships, First Round, Albuquerque

1995 (22-7 / 12-6, T2nd Pac-10)

Coach: Cindy Fredrick

3-0 # Weber State
3-0 # New Mexico State
3-0 # Gonzaga
3-0 # BYU
3-0 & Santa Clara
3-1 & Wyoming
3-0 SE Missouri State
3-0 * USC
3-1 * UCLA
3-0 * @Arizona
3-1 * @Arizona State
3-1 * Washington
3-0 Idaho
2-3 * Stanford
3-0 * California
3-0 * @Oregon State
3-0 * @Oregon
3-1 * Arizona State
2-3 * Arizona
1-3 * @Washington
3-2 * @California
0-3 * @Stanford
3-1 * Oregon
3-1 * Oregon State
1-3 * @USC
1-3 * @UCLA
3-0 + Northern Illinois
3-1 + South Florida
0-3 \$ Oral Roberts

- Cougar Challenge, Pullman
& - Wyoming Tournament, Laramie
* - Pac-10 Conference Match
+ - South Florida Tournament, Tampa
\$ - NCAA Championships, Second Round, Pullman

1996 (27-6 / 14-4, 2nd Pac-10)

Coach: Cindy Fredrick

3-0 # Tulsa
3-0 # Gonzaga
3-0 # Idaho State
3-0 # Southern Illinois
3-0 & Dayton
3-0 & Iowa
3-0 & Iowa State
3-0 ^ Clemson
0-3 ^ Penn State
3-0 @Idaho
0-3 * @Washington
0-3 * @Stanford
3-2 * @California
3-0 * Oregon State
3-0 * Oregon
0-3 * @USC
3-0 * @UCLA
3-1 * Arizona
3-0 * Arizona State
3-0 * California
3-1 * Stanford
3-0 * @Oregon
3-0 * @Oregon State
3-1 * UCLA
3-1 * USC
3-0 * @Arizona State
0-3 * @Arizona
3-0 * Washington
3-0 % Notre Dame
3-0 % South Florida
3-0 \$ Kansas State
3-1 \$\$ Loyola Marymount
0-3 \$\$ Stanford

- Cougar Challenge, Pullman
& - Iowa State Tournament, Ames

^ - MIZUNO USA Cup, Chicago
% - Pacific Bankers Classic, Stockton
* - Pac-10 Conference Match
\$ - NCAA Championships, Second Round, Pullman
\$\$ - NCAA Championships, Pacific Regional, Stanford

1997 (26-7 / 12-6, T4th Pac-10)

Coach: Cindy Fredrick

3-0 # Santa Clara
3-0 # Texas-Arlington
3-0 # Wichita State
3-0 # Gonzaga
3-1 & Utah
3-0 & Gonzaga
3-0 & Notre Dame
3-0 Wyoming
3-0 ^ Providence College
3-0 ^ Villanova
3-0 ^ Rhode Island
3-0 Idaho
3-2 * @ Oregon State
3-1 * @ Oregon
3-2 * USC
3-1 * UCLA
2-3 * @ Arizona
3-1 * @ Arizona State
1-3 * Washington
0-3 * Stanford
3-0 * California
0-3 * @ USC
3-1 * @ UCLA
3-0 * Arizona State
3-1 * Arizona
0-3 * @ Washington
3-1 * @ California
0-3 * @ Stanford
3-0 * Oregon State
3-0 * Oregon
3-0 \$ Lehigh
3-1 \$\$ Colorado State
0-3 \$\$\$ Florida

- Cougar Challenge, Pullman
& - Spikeoff Spokane, Spokane
^ - Rhode Island Subway Classic, Kingston
* - Pac-10 Conference Match
\$ - NCAA Championships, First Round, Pullman
\$\$ - NCAA Championships, Second Round, Pullman
\$\$\$ - NCAA Championships, Central Regional, Madison, Wis.

1998 (12-14 / 8-10, T5th Pac-10)

Coach: Cindy Fredrick

3-2 # Utah
3-1 # Gonzaga
0-3 # Louisville
0-3 & BYU
0-3 & Long Beach State
0-3 * Arizona
3-1 * Arizona State
3-0 @Idaho
2-3 * @ Washington
0-3 * @ Stanford
3-2 * @ California
3-0 * Oregon State
3-0 * Oregon
3-1 * @ USC
0-3 * @ UCLA
2-3 * Washington
3-0 * California
0-3 * Stanford
3-1 * @ Oregon

3-1 * @Oregon State
1-3 * UCLA
0-3 * USC
1-3 * @Arizona State
2-3 * @Arizona
3-0 ^ South Carolina
0-3 ^ Florida

- Cougar Challenge, Pullman
& - Matches played at Provo, Utah
^ - DisneyWorld SEC-Pac-10 Challenge, Orlando
* - Pac-10 Conference Match

1999 (13-15 / 7-11, T6th Pac-10)

Coach: Cindy Fredrick

3-0 # Creighton
3-0 # Boise State
3-0 # Gonzaga
3-1 # San Jose State
0-3 & Texas A&M
3-2 & New Mexico
1-3 & Colorado
0-3 * Stanford
3-1 * California
3-0 * @Oregon
0-3 * @Oregon State
2-3 * USC
0-3 * UCLA
0-3 * @Arizona
1-3 * @Arizona State
3-0 Idaho
3-2 * Washington
3-0 * Oregon
3-0 * Oregon State
0-3 * @UCLA
0-3 * @USC
3-0 * Arizona State
0-3 * Arizona
3-0 * @Washington
0-3 * @Stanford
2-3 * @California
0-3 ^ Notre Dame
0-3 ^ Sacramento State

- Cougar Challenge, Pullman
& - Jones Intercable Invitational, Albuquerque
^ - Pacific Bankers' Classic, Stockton
* - Pac-10 Conference Match

2000 (19-10 / 9-9, T5th Pac-10)

Coach: Cindy Fredrick

3-0 # Gonzaga
3-0 # Rhode Island
3-1 # Utah State
3-2 # #17 Kansas St.
3-0 + UC Riverside
3-0 + Cal St. Fullerton
3-0 + #22 N. Iowa
3-0 + @Fresno State
0-3 * @#6 USC
0-3 * @#7 UCLA
3-1 Idaho
0-3 * #10 Arizona
2-3 * Arizona State
3-0 * @Washington
1-3 * @#21 Stanford
0-3 * @California
3-1 * Oregon State
3-0 * Oregon
2-3 * @Arizona State
1-3 * @#5 Arizona
3-1 * Washington
3-0 * California
3-1 * #17 Stanford

3-0 * @Oregon
 3-1 * @Oregon State
 3-1 * #7 UCLA
 1-3 * #3 USC
 3-0 \$ Tennessee
 1-3 \$\$ @#8 Penn State

- Cougar Challenge, Pullman, Wash.
 + - Fresno State Tournament, Fresno
 * - Pac-10 Conference match
 \$ - NCAA Championships, First Round, University Park, Pa.
 \$\$ - NCAA Championships, Second Round, University Park, Pa.

2001 (17-12 / 9-9, 6th Pac-10)

Coach: Cindy Fredrick

3-0 # Bradley
 3-0 # Boise State
 3-0 # Gonzaga
 2-3 # #12 Pacific
 3-0 + Houston
 3-0 + Arkansas
 0-3 + @#22 Kansas State
 0-3 * #4 Stanford
 3-0 * California
 1-3 * @Oregon State
 3-0 * @Oregon
 0-3 * #3 USC
 0-3 * #5 UCLA
 3-0 * Washington
 0-3 * @#7 Arizona
 3-1 * @Arizona State
 3-1 * @California
 0-3 * @#4 Stanford
 3-0 * Oregon State
 3-0 * Oregon
 3-0 Idaho
 2-3 * @#8 UCLA
 1-3 * @#5 USC
 3-0 * Arizona State
 0-3 * #4 Arizona
 3-0 * @Washington
 3-0 ^ Rice
 3-0 ^ William & Mary
 0-3 \$ Hawai'i

Cougar Challenge, Pullman
 + Wildcat Classic, Manhattan, Kan.
 * Pac-10 Conference match
 ^ Hard Rock Thanksgiving Classic, Las Vegas
 \$ NCAA Championships, First Round, Pullman

2002 (24-8 / 11-7 3rd Pac-10)

Coach: Cindy Fredrick

3-1 # Nevada
 3-0 # Gonzaga
 3-0 # #23 Brigham Young
 3-0 % Weber State
 3-0 % Alaska Fairbanks
 3-0 % Southwest Texas State
 3-0 + Butler
 3-0 + Indiana Purdue Ft. Wayne
 3-0 + San Francisco
 3-0 * Oregon State
 3-0 * Oregon
 0-3 * @#1 USC
 2-3 * @#17 UCLA
 3-2 * #17 Arizona
 3-0 * #24 Arizona State
 3-0 @Idaho
 1-3 * @Washington
 0-3 * @#6 Stanford

2-3 * @California
 3-2 * #13 UCLA
 1-3 * #1 USC
 3-0 * @#19 Arizona State
 2-3 * @#14 Arizona
 3-0 * #21 Washington
 3-0 * California
 3-1 * #1 Stanford
 3-0 * @Oregon
 3-0 * @Oregon State
 3-0 \$ Oral Roberts
 3-1 \$\$ @#11 Kansas State
 3-0 \$\$\$ #6 Northern Iowa
 1-3 \$\$\$ @#5 Florida

Cougar Challenge, Pullman
 % Nanook Classic, Fairbanks, Alaska
 + Molten Golden Gate Classic, San Francisco
 * Pac-10 Conference match
 \$ NCAA Championships, First Round, Manhattan, Kan.
 \$\$ NCAA Championships, Second Round, Manhattan, Kansas
 \$\$\$ NCAA Championships, East Region Semifinal, Gainesville, Fla.
 \$\$\$ NCAA Championships, East Region Final, Gainesville, Fla.

2003 (9-20 / 5-13, T7th Pac-10)

Coach: Cindy Fredrick

3-1 # Oklahoma
 2-3 # San Francisco
 2-3 # Wichita State
 2-3 % Utah
 0-3 % #18 Missouri
 2-3 % Utah Valley State
 1-3 + Saint Louis
 3-0 + New Mexico
 3-1 + #22 Loyola Marymount
 3-1 * #16 Arizona
 3-0 * Arizona State
 0-3 * @California
 0-3 * @#4 Stanford
 2-3 * #8 UCLA
 0-3 * #1 USC
 3-0 Gonzaga
 1-3 * @Oregon State
 3-0 * @Oregon
 0-3 * #12 Washington
 1-3 * #7 California
 2-3 * #6 Stanford
 2-3 Idaho
 1-3 * @#8 UCLA
 0-3 * @#1 USC
 2-3 * Oregon State
 3-0 * Oregon
 0-3 * @#11 Washington
 3-2 * @Arizona State
 1-3 * @#25 Arizona

Cougar Challenge, Pullman
 % Utah Hampton Inn Classic, Salt Lake City
 + Cougar Mania Invitational, Pullman
 * Pac-10 Conference match

2004 (5-26 / 2-16, 9th Pac-10)

Coach: Brian Heffernan

2-3 @UNLV
 2-3 # San Jose State
 0-3 # UNLV
 1-3 #10 Colorado State
 1-3 % Cincinnati
 3-2 % Miami
 1-3 % #22 Loyola Marymount

3-0 Gonzaga
 3-0 + Radford
 1-3 + Syracuse
 0-3 + Denver
 0-3 Portland
 0-3 * @#2 USC
 0-3 * @#10 UCLA
 1-3 * Oregon State
 0-3 * Oregon
 0-3 * @#1 Washington
 1-3 @Idaho
 0-3 * @#22 Arizona
 2-3 * @Arizona State
 0-3 * #11 Stanford
 0-3 * #13 California
 3-2 * @Oregon
 0-3 * @Oregon State
 2-3 * #1 Washington
 0-3 * Arizona State
 0-3 * #21 Arizona
 0-3 * @#14 California
 0-3 * @#9 Stanford
 0-3 * #16 UCLA
 3-2 * #6 USC

UNLV Classic, Las Vegas
 % LMU Furama Hotel Invite, Los Angeles
 + Denver Invitational
 * Pac-10 Conference match

2005 (10-21 / 2-16 9th Pac-10)

Coach: Brian Heffernan

3-1 @Portland
 0-3 # Idaho State
 3-0 # Toledo
 2-3 # @UC Davis
 3-1 + Oral Roberts
 3-1 + Buffalo
 0-3 + Idaho
 3-1 @Gonzaga
 3-0 ^ + Middle Tennessee State
 3-0 ^ Oakland
 3-2 ^ @Saint Louis
 0-3 * #2 Washington
 1-3 Gonzaga
 1-3 @Eastern Washington
 0-3 * #13 Arizona
 3-1 * Arizona State
 0-3 * @#3 Stanford
 0-3 * @#13 California
 0-3 * #17 USC
 0-3 * #22 UCLA
 1-3 * @Oregon State
 0-3 * @Oregon
 1-3 * @Arizona State
 1-3 * @#8 California
 2-3 * #18 California
 1-3 * #4 Stanford
 0-3 * @#21 UCLA
 0-3 * @#15 USC
 3-2 * Oregon
 1-3 * Oregon State
 0-3 * @#3 Washington

H.Johnson Aggie Invite, Davis, Calif.
 + Baden Cougar Classic, Pullman.
 ^ SLU Billikens Classic, St. Louis
 * Pac-10 Conference match
 + Game forfeited to WSU in 2008

2006 (15-17 / 3-15, 9th Pac-10)

Coach: Brian Heffernan

3-1 % Gonzaga
 3-0 % North Dakota State
 3-0 % Weber State

1-3 % @South Dakota State
 3-0 @Portland
 3-1 # UNLV
 3-0 # Boise State
 3-0 # UC Davis
 3-0 ^ Duquesne
 3-0 ^ Louisiana-Lafayette
 3-0 ^ Tulsa
 3-0 ^ @UT Arlington
 3-1 Idaho
 0-3 @Idaho
 0-3 * #6 Stanford
 0-3 * #8 California
 1-3 * @#5 USC
 1-3 * @#3 UCLA
 3-2 * Oregon State
 0-3 * Oregon
 0-3 * @#5 Washington
 3-1 * @Arizona
 1-3 * @Arizona State
 0-3 * #4 UCLA
 0-3 * #5 USC
 0-3 * @#24 Oregon
 3-0 * @Oregon State
 0-3 * #4 Washington
 2-3 * Arizona State
 1-3 * Arizona
 0-3 * @#14 California
 0-3 * @#3 Stanford

% South Dakota State Jackrabbit Kickoff, Brookings
 # Baden Cougar Challenge, Pullman
 ^ Texas-Arlington Invitational, Arlington
 * Pac-10 Conference match

2007 (10-22 / 1-17, 10th Pac-10)

Coach: Brian Heffernan

3-0 # Portland
 3-1 # Northern Colorado
 3-0 # South Dakota State
 3-0 Idaho
 3-1 @Gonzaga
 3-0 % @Montana State
 0-3 % Texas A&M
 3-0 % Utah State
 3-1 ^ Hofstra
 0-3 ^ UNLV
 3-0 ^ @Nevada
 0-3 & #17 Ohio
 1-3 & Long Beach State
 0-3 & @Denver
 2-3 * @Oregon State
 0-3 * @#24 Oregon
 0-3 * #8 Washington
 1-3 * Arizona
 0-3 * Arizona State
 0-3 * @#2 Stanford
 0-3 * @#10 California
 1-3 * #4 USC
 0-3 * #7 UCLA
 0-3 * @#4 Washington
 1-3 * @Arizona State
 0-3 * @Arizona
 0-3 * #7 California
 0-3 * #5 Stanford
 0-3 * @#10 UCLA
 0-3 * @#8 USC
 0-3 * #13 Oregon
 3-2 * Oregon State

Baden Cougar Challenge, Pullman
 % Montana State Holiday Inn Classic, Bozeman
 ^ Nevada AT&T Invite, Reno
 + Pioneer Classic, Denver
 * Pac-10 Conference match

2008 (10-19 / 3-15, t-9th Pac-10)

Coach: Andrew Palileo

3-2 % Cal State Northridge
 3-2 % Seattle University
 3-1 % @Boise State
 0-3 ^ @Idaho
 0-3 ^ Notre Dame
 1-3 ^ Eastern Washington
 3-2 Gonzaga
 0-3 # #18 Wichita State
 3-0 # Montana State
 3-0 # Northwestern
 3-0 Utah Valley University
 0-3 * @Arizona
 0-3 * @Arizona State
 0-3 * #6 Stanford
 0-3 * #8 California
 0-3 * @#11 USC
 0-3 * @#8 UCLA
 1-3 * #25 Oregon State
 0-3 * #6 Oregon
 0-3 * @#6 Washington
 1-3 * @#4 California
 0-3 * @#5 Stanford
 0-3 * #9 UCLA
 0-3 * #10 USC
 0-3 * @#8 Oregon
 3-2 * @Oregon State
 1-3 * #5 Washington
 3-1 * Arizona State
 3-2 * Arizona

% Boise State Invitational
 ^ Idaho Classic, Moscow
 # Baden Cougar Challenge, Pullman
 * Pac-10 Conference match

2009 (18-13 / 6-12, 8th Pac-10)

Coach: Andrew Palileo

3-1 % UC Davis
 3-1 % Montana State
 3-0 % Portland
 3-0 ^ Missouri
 3-0 ^ #17 Utah
 3-0 ^ @Utah Valley
 3-0 @Weber State
 3-1 # Cal State Northridge
 3-2 # Idaho
 3-0 # Cal State Northridge
 3-0 * @Oregon State
 1-3 * @#7 Oregon
 3-0 * #18 Arizona
 3-2 * Arizona State
 1-3 * @#7 Stanford
 0-3 * @#15 California
 3-0 * #16 USC
 0-3 * #12 UCLA
 3-1 * #4 Washington
 1-3 * @Arizona State
 1-3 * @#18 Arizona
 1-3 * #13 California
 0-3 * #5 Stanford
 1-3 * @#6 UCLA
 1-3 * @#17 USC
 3-0 Eastern Washington
 0-3 * @#4 Washington
 1-3 * #18 Oregon
 3-2 * Oregon State
 0-3 \$ #20 Northern Iowa

% Nike Cougar Invitational, Pullman
 ^ Utah Valley LaQuinta Invite, Orem
 # Nike Cougar Challenge, Pullman
 * Pac-10 Conference match
 \$ - NCAA Championships, First Round, Lincoln



2010 (6-22 / 0-18, 10th Pac-10)

Coach: Andrew Palileo

3-0 & UC Irvine
3-1 & Weber State
0-3 & Idaho
0-3 ^ Tulsa
1-3 ^ Santa Barbara
3-1 ^ @San Francisco
3-0 # Eastern Washington
3-1 # Montana State
1-3 # Cal Poly
3-1 Gonzaga
0-3 * @#15 Oregon
1-3 * @Oregon State
0-3 * #12 UCLA
0-3 * #5 USC
0-3 * @#9 Washington
1-3 * @#6 California
0-3 * @#2 Stanford
2-3 * Arizona State
0-3 * #25 Arizona
0-3 * @#8 USC
0-3 * @#11 UCLA
0-3 * #11 Washington
1-3 * #2 Stanford
0-3 * #4 California
1-3 * @#22 Arizona
1-3 * @Arizona State
2-3 * Oregon State
0-3 * #24 Oregon

& Nike Cougar Invitational, Pullman
^ USF Powerade Asics Challenge, San Francisco

Nike Cougar Challenge, Pullman
* Pac-10 Conference match

2011 (12-20 / 4-18, 11th Pac-12)

Coach: Jen Greeny

3-1 & Santa Clara
2-3 & Eastern Washington
3-2 & @Seattle
3-0 ^ Nevada
3-2 ^ @Portland
3-1 ^ Butler
0-3 ^ Texas A&M
3-0 # Manhattan
3-2 # San Francisco
3-1 # Sam Houston State
0-3 * #16 UCLA
0-3 * #13 USC
3-2 * @Arizona State
0-3 * @Arizona
3-0 * Oregon State
1-3 * #15 Oregon
1-3 * Utah
3-0 * Colorado
0-3 * @#7 Stanford
0-3 * @#4 California
2-3 * @#18 Oregon
2-3 * @Oregon State
1-3 * Arizona
3-0 * Arizona State
0-3 * @#4 USC
0-3 * @#1 UCLA
0-3 * #5 California
1-3 * #3 Stanford
2-3 * @Colorado
1-3 * @Utah
0-3 * @#11 Washington
2-3 * #11 Washington

& Seattle University Invite, Seattle
^ Portland Nike Invite, Portland
Nike Cougar Challenge, Pullman
* Pac-10 Conference match

2012 (13-19 / 3-17, 12th Pac-12)

Coach: Jen Greeny

3-0 + Montana
0-3 + Pacific
2-3 + @Idaho
3-0 # Alabama State
3-0 # Seattle
3-0 # Weber State
3-1 % Cal State Fullerton
3-0 % @Nevada
3-0 % CSU Bakersfield
3-0 ^ Norfolk State
3-1 ^ CSU Bakersfield
3-1 ^ @Air Force Academy
1-3 * @#5 Washington
1-3 * @Arizona State
0-3 * #4 UCLA
0-3 * #3 USC
0-3 * @Colorado
1-3 * @Utah
0-3 * @#5 Oregon
1-3 * @Oregon State
0-3 * California
2-3 * #2 Stanford
0-3 * @#6 UCLA
0-3 * @#7 USC
3-0 * Colorado
3-2 * Utah
0-3 * @#1 Stanford
1-3 * @California
1-3 * Oregon State
1-3 * #4 Oregon
3-1 * Arizona
0-3 * #5 Washington

+ Idaho Nike Invitational, Moscow
Cougar Challenge, Pullman
% Nevada Wolf Pack Invite, Reno
^ Air Force Academy Invite, Colorado Springs
* Pac-12 Conference match

2013 (18-15 / 5-15, 11th Pac-12)

Coach: Jen Greeny

3-0 + Alabama
3-2 + Seton Hall
3-1 + @Army
3-0 # Eastern Washington
3-0 # Texas Tech
3-1 # Montana
3-0 # South Dakota
3-0 ^ Jackson State
3-0 ^ Lamar
3-0 ^ @Sam Houston State
3-0 % Idaho
3-0 % Seattle University
3-1 % Nevada
0-3 * #2 Washington
3-2 * @Oregon State
2-3 * @Utah
1-3 * @Colorado
3-2 * #16 Arizona State
2-3 * Arizona
0-3 * #7 Stanford
1-3 * California
0-3 * @#4 USC
1-3 * @UCLA
2-3 * Colorado
3-0 * Utah
0-3 * @Arizona State
0-3 * @Arizona
2-3 * UCLA
3-2 * #4 USC
0-3 * @#5 Stanford
3-2 * @#23 California
0-3 * Oregon
0-3 * @#5 Washington

+ Army Black Knights Invite, West

Point, NY
Cougar Challenge, Pullman
^ Sam Houston State Invite, Huntsville, Texas
% Cougar Invitational, Pullman
* Pac-12 Conference match

2014 (10-22 / 1-19, 12th Pac-12)

Coach: Jen Greeny

0-3 + Wyoming
3-0 + @Montana
3-2 + Cal Poly
3-0 ^ IUPUI
3-1 ^ @Notre Dame
3-1 ^ Western Michigan
3-0 % Virginia Tech
3-0 % Belmont
0-3 % #12 Illinois
3-1 # Idaho
3-0 # Portland State
1-3 # #23 Loyola Marymount
0-3 * @#4 Washington
0-3 * @#1 Stanford
2-3 * #19 USC
1-3 * #20 UCLA
1-3 * @#11 Oregon
1-3 * @Oregon State
1-3 * @#16 Arizona
2-3 * @#17 Arizona State
0-3 * Colorado
3-0 * Utah
1-3 * @#20 USC
2-3 * @#16 UCLA
1-3 * Oregon State
1-3 * #11 Oregon
1-3 * @Utah
2-3 * @#22 Colorado
2-3 * #22 Arizona State
2-3 * #13 Arizona
0-3 * California
0-3 * #5 Washington

+ Montana Invitational, Missoula
^ Notre Dame Golden Dome Invite
% Middle Tennessee State Blue Raider Bash, Murfreesboro, Tenn.
Cougar Challenge, Pullman
* Pac-12 Conference match

2015 VOLLEYBALL SCHEDULE

FRI	AUG. 28	RADFORD [#]	10 A.M.
FRI	AUG. 28	ELON [#]	4 P.M.
SAT	AUG. 29	EAST TENNESSEE STATE [#]	6 A.M.
FRI	SEPT. 4	UC IRVINE [#]	4:30 P.M.
SAT	SEPT. 5	SEATTLE UNIVERSITY [#]	10 A.M.
SAT	SEPT. 5	IDAHO [#]	7 P.M.
FRI	SEPT. 11	MOREHEAD STATE[%]	NOON
FRI	SEPT. 11	BALL STATE[%]	7:30 P.M.
SAT	SEPT. 12	UTAH VALLEY[%]	7 P.M.
FRI	SEPT. 18	NORTHWESTERN STATE	11:30 A.M.
FRI	SEPT. 18	TEXAS TECH	5 P.M.
SAT	SEPT. 19	PORTLAND STATE	9 A.M.
THU	SEPT. 24	WASHINGTON^{*^}	7 P.M.
SAT	SEPT. 26	UTAH[*]	7 P.M.
FRI	OCT. 2	USC [*]	7 P.M.
SUN	OCT. 4	UCLA [*]	11 A.M.
FRI	OCT. 9	ARIZONA^{*^}	6 P.M.
SUN	OCT. 11	ARIZONA STATE^{*^}	11 A.M.
FRI	OCT. 16	OREGON STATE^{*^}	5:30 P.M.
SUN	OCT. 18	OREGON^{*^}	1 P.M.
FRI	OCT. 23	STANFORD [*]	7 P.M.
SUN	OCT. 25	CALIFORNIA ^{*^}	11 A.M.
FRI	OCT. 30	UCLA[*]	7 P.M.
SUN	NOV. 1	USC[*]	12:30 P.M.
FRI	NOV. 6	ARIZONA ^{*^}	5 P.M.
SUN	NOV. 8	ARIZONA STATE ^{*^}	1 P.M.
FRI	NOV. 13	CALIFORNIA[*]	7 P.M.
SUN	NOV. 15	STANFORD^{*^}	11 A.M.
WED	NOV. 18	OREGON ^{*^}	TBA
FRI	NOV. 20	OREGON STATE [*]	7 P.M.
WED	NOV. 25	COLORADO [*]	1 P.M.
SAT	NOV. 28	WASHINGTON ^{*^}	TBA
FRI-SUN	DEC. 4-6	NCAA TOURNAMENT FIRST/SECOND ROUNDS ^{&}	
FRI-SAT	DEC. 11-12	NCAA TOURNAMENT REGIONALS [!]	
THU	DEC. 17	NCAA SEMIFINAL [†]	
SAT	DEC. 19	NCAA FINAL [†]	

[#] Radford Highlander Invitational, Radford, Va.

^{\$} Texas Tech Lone Star Showdown, Lubbock, Texas

[%] Cougar Challenge, Pullman, Wash.

^{*} Pac-12 Conference Match

[^] Pac-12 Network Coverage. All Times Pacific, Subject to Change

[&] TBA

[!] Austin, Texas., Des Moines, Iowa, Lexington, Ky., San Diego

[†] Omaha, Neb. (CenturyLink Center)

HOME MATCHES ARE WHITE



WASHINGTON STATE
VOLLEYBALL